



# K. International School Tokyo

## School Profile 2020-2021

CEEB #680789

### Mission

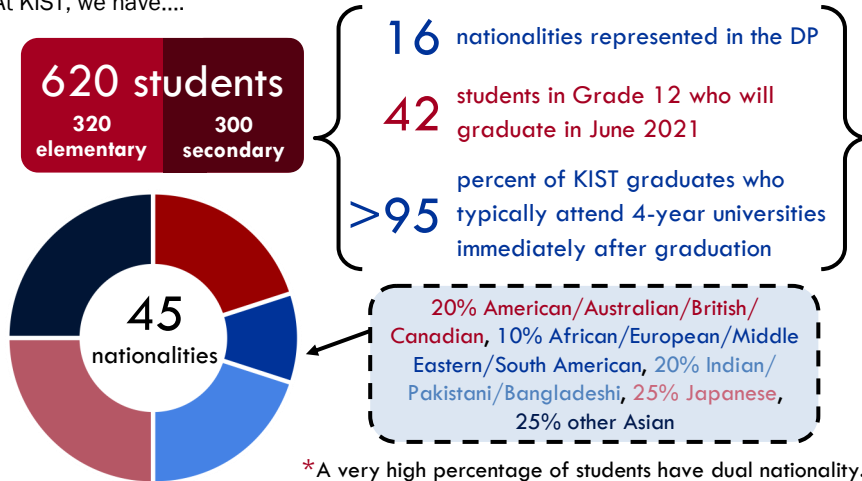
K. International School Tokyo provides academically motivated children from diverse cultural and social backgrounds with a high-quality education in a safe and supportive environment in order to develop competent, academic and compassionate individuals who make meaningful contributions to our global community.

### School overview

K. International School Tokyo (KIST) is a private, coeducational, non-denominational day school serving the international community of Tokyo from pre-Kindergarten through Grade 12. Authorized by the International Baccalaureate as an IB World School, KIST was the first school in Tokyo and the second school in Japan fully authorized to offer the full IB continuum: the Primary Years Programme (PYP), the Middle Years Programme (MYP) and the Diploma Programme (DP). KIST is accredited by the Council of International Schools and is recognized as an educational foundation by the Tokyo Metropolitan Government. KIST is authorized by Edexcel to deliver the IGCSE curriculum. English is the language of instruction at all levels.

### Enrollment and admissions

At KIST, we have....



As an international school, KIST welcomes internationally-minded students, regardless of race, national or ethnic origin, religion, gender or socio-economic background who demonstrate a commitment to our mission and guiding beliefs.

To promote diversity, we maintain a balance of nationalities at each grade level, as well as in individual classes. We also ensure that the balance of nationalities and language groups is diverse, while at the same time does not compromise the position of English as the language of instruction.

### Administration and counselors

- ◆ Head of School: Dr. Kevin Yoshihara ([kevin.yoshihara@kist.ed.jp](mailto:kevin.yoshihara@kist.ed.jp))
- ◆ Secondary School Principal: Mr. Mark Cowe ([mark.cowe@kist.ed.jp](mailto:mark.cowe@kist.ed.jp))
- ◆ IB DP Coordinator: Mr. Hiro Komaki ([hiro.komaki@kist.ed.jp](mailto:hiro.komaki@kist.ed.jp))
- ◆ Guidance Counselor: Mr. Thomas Waterfall ([thomas.waterfall@kist.ed.jp](mailto:thomas.waterfall@kist.ed.jp))

### Staff

- 69** full time teachers
- 19** different nationalities of staff
- 30** staff hold postgraduate degrees (Master or PhD)

### School year

KIST ensures a minimum of 180 days in the school year, divided into 2 semesters:

- ◆ Semester 1: August—January
- ◆ Semester 2: February—June

### Curriculum and grading in the DP

In Grades 11 and 12, all students are enrolled in the 2-year IB Diploma Programme. All students are required to study six subjects: a maximum of three at Standard Level (SL) and a maximum of four at Higher Level (HL). In addition, they must complete 150 hours of Creativity, Activity, Service (CAS); take a course in Theory of Knowledge (ToK); and write an Extended Essay of 4,000 words. School-based examinations are held at the end of Grade 11, with externally set examinations at the end of Grade 12.

Academic achievement is graded on the IB 1 to 7 scale, with 1 being the lowest and 7 being the highest mark attainable. As an IB World School, it is our philosophy neither to rank students against each other nor to calculate grade point averages (GPA).

### IB grade descriptors

7: Excellent | 6: Very good | 5: Good | 4: Satisfactory | 3: Mediocre | 2: Poor | 1: Very poor

### IB DP subject options

The following courses were offered during the 2018-2020 DP cycle:

- ◆ English A Language and Literature SL/HL
- ◆ Japanese A Language and Literature SL/HL
- ◆ Japanese B SL/HL
- ◆ French AB initio SL (Online)
- ◆ Business Management SL/HL
- ◆ Economics SL/HL
- ◆ Geography SL/HL
- ◆ History SL/HL
- ◆ Biology SL/HL
- ◆ Chemistry SL/HL
- ◆ Environmental Systems and Societies SL
- ◆ Physics SL/HL
- ◆ Mathematics A&A SL/HL
- ◆ Mathematical Studies SL
- ◆ Visual Arts SL/HL

A variety of online course options are also available through the IB affiliated Pamoja Education.

In 2020, 12% of KIST students attained a Bilingual IB Diploma.

### Graduation requirements

To graduate with an IB Diploma, students must meet all external requirements set by the International Baccalaureate. These include a minimum score of 24 in six subjects, as well as successful completion of the ToK, Extended Essay, and CAS components.

To graduate with a KIST High School Diploma, students must successfully complete all course requirements for Grade 11 and 12, a research paper, and service program contributions.

### K. International School Tokyo

1-5-15 Shirakawa, Koto-ku Tokyo, Japan 135-0021  
Phone: +81-3-3641-9993 Fax: +81-3-3641-9994  
[www.kist.ed.jp](http://www.kist.ed.jp)





## DP results 2018-2020

| Year of graduation       | 2020         | 2019         | 2018         |
|--------------------------|--------------|--------------|--------------|
| KIST DP average          | <b>39.83</b> | <b>39.20</b> | <b>37.76</b> |
| IB DP world average      | 31.38        | 29.65        | 29.78        |
| KIST highest DP score    | <b>45</b>    | <b>45</b>    | <b>44</b>    |
| % attaining Diploma      | <b>100%</b>  | <b>100%</b>  | <b>100%</b>  |
| KIST G12 DP graduates    | 41           | 35           | 34           |
| # Diplomas attained      | 41           | 35           | 34           |
| KIST G12 graduates       | 44           | 37           | 38           |
| % of students in full DP | <b>93%</b>   | <b>95%</b>   | <b>89%</b>   |

## Class of 2020 results

|  |            |
|--|------------|
| Percent of students with 40 points or more in the DP | <b>61%</b> |
| Percent of students above the IB World Average (WA)  | <b>97%</b> |
| Percent of subjects 0.5 points or more above the WA  | <b>97%</b> |
| Percent of subjects more than one point above the WA | <b>59%</b> |

## University acceptances

Regularly, 100% of KIST graduates attain university/college acceptance. Some of the universities from which acceptances were attained include the following. \* indicates that a scholarship was awarded.

## Asia (Excluding Japan)

Hong Kong University of Science and Technology\*  
Korea Advanced Institute of Science and Technology  
Raffles Design Institute  
Seoul National University\*  
University of Hong Kong\*  
Yale NUS College\*  
Yonsei University\* (Medicine)

## Australia

The Australian National University  
Queensland University of Technology  
University of Melbourne  
University of New South Wales  
University of Queensland  
University of Sydney\* (Medicine)

## Canada

McGill University\*  
Simon Fraser University  
University of British Columbia  
University of Toronto\*  
University of Waterloo  
York University

## Europe

Ecole Hoteliere de Lausanne  
University College Utrecht  
University of Groningen

## Japan

Akita International University

## DP results for the class of 2020 (for courses offered at KIST)

| DP Subject              | # of students | % of students attaining |     |      | School average | World average | KIST +/- over WA |
|-------------------------|---------------|-------------------------|-----|------|----------------|---------------|------------------|
|                         |               | 7                       | 6   | 5    |                |               |                  |
| English A L&L HL        | 31            | 10%                     | 74% | 13%  | 5.90           | 5.14          | 0.76             |
| English A L&L SL        | 10            | 20%                     | 60% | 20%  | 6.00           | 5.45          | 0.55             |
| Japanese A L&L HL       | 3             | 67%                     | 33% | 0%   | 6.67           | 5.86          | 0.81             |
| Japanese A L&L SL       | 2             | 100%                    | 0%  | 0%   | 7.00           | 5.82          | <b>1.18</b>      |
| Japanese B HL           | 16            | 88%                     | 12% | 0%   | 6.88           | 6.17          | 0.71             |
| Japanese B SL           | 14            | 71%                     | 29% | 0%   | 6.71           | 5.16          | <b>1.55</b>      |
| French AB. SL           | 6             | 17%                     | 50% | 33%  | 5.83           | 4.97          | 0.86             |
| Business Management HL  | 10            | 60%                     | 40% | 0%   | 6.60           | 5.31          | <b>1.29</b>      |
| Business Management SL  | 7             | 43%                     | 43% | 14%  | 6.29           | 5.25          | <b>1.04</b>      |
| Economics HL            | 17            | 35%                     | 59% | 6%   | 6.24           | 5.34          | 0.9              |
| Economics SL            | 4             | 25%                     | 75% | 0%   | 6.25           | 4.98          | <b>1.27</b>      |
| Geography HL            | 2             | 0%                      | 0%  | 100% | 5.00           | 5.40          | -0.40            |
| Geography SL            | 5             | 20%                     | 40% | 40%  | 5.80           | 4.98          | 0.82             |
| History HL              | 10            | 20%                     | 30% | 30%  | 5.50           | 4.53          | 0.97             |
| History SL              | 3             | 33%                     | 33% | 33%  | 6.00           | 4.70          | <b>1.30</b>      |
| Biology HL              | 10            | 50%                     | 30% | 20%  | 6.30           | 4.72          | <b>1.58</b>      |
| Biology SL              | 5             | 40%                     | 40% | 0%   | 6.00           | 4.45          | <b>1.55</b>      |
| Chemistry HL            | 10            | 20%                     | 50% | 20%  | 5.80           | 4.92          | 0.88             |
| Chemistry SL            | 6             | 50%                     | 17% | 33%  | 6.17           | 4.34          | <b>1.83</b>      |
| Env Sys & Soc SL        | 8             | 38%                     | 38% | 24%  | 6.13           | 4.36          | <b>1.77</b>      |
| Physics HL              | 6             | 100%                    | 0%  | 0%   | 7.00           | 5.29          | <b>1.71</b>      |
| Physics SL              | 8             | 50%                     | 25% | 25%  | 6.25           | 4.70          | <b>1.55</b>      |
| Mathematics HL          | 4             | 100%                    | 0%  | 0%   | 7.00           | 5.04          | <b>1.96</b>      |
| Mathematics SL          | 29            | 93%                     | 7%  | 0%   | 6.93           | 4.79          | <b>2.14</b>      |
| Mathematical Studies SL | 8             | 63%                     | 38% | 0%   | 6.63           | 4.18          | <b>2.45</b>      |
| Visual Arts HL          | 5             | 0%                      | 40% | 20%  | 5.00           | 4.21          | 0.79             |
| Visual Arts SL          | 5             | 0%                      | 60% | 40%  | 5.60           | 3.85          | <b>1.75</b>      |

\*the above school averages are calculated for students who attained IB Diplomas

International Christian University\*  
International University of Health and Welfare (Medicine)  
Juntendo University (Medicine)  
Keio University  
Nagoya University\*  
Okayama University (Medicine)  
Rikkyo University  
Ritsumeikan University  
Sophia University\*  
Tokyo Medical and Dental University (Medicine)  
University of Tokyo\*  
Waseda University\*

## United Kingdom

Hull York Medical School (Medicine)  
Imperial College London  
King's College London  
Lancaster University  
London School of Economics  
St. George's University (Medicine)  
University of Cambridge\*  
University College London  
University of Bath\*  
University of Birmingham  
University of Durham  
University of Exeter  
University of Edinburgh  
University of St. Andrews  
University of Surrey  
University of Warwick

## United States of America

Boston College\*  
Boston University\*  
Brandeis University  
Brown University  
California Institute of Technology  
California University  
Dartmouth College  
Duke University\*  
Northeastern University\*  
Occidental College  
Pennsylvania State University  
Princeton University\*  
Smith College  
Stanford University\*  
The George Washington University\*  
University of Chicago\*  
University of California Los Angeles  
University of California Santa Barbara  
University of Colorado at Boulder  
University of Illinois at Chicago  
University of Miami  
University of Minnesota Twin Cities  
University of Michigan  
University of Oregon  
University of Pennsylvania\*  
University of Rochester\*  
University of Southern California  
University of Virginia

## UAE

New York University Abu Dhabi\*