



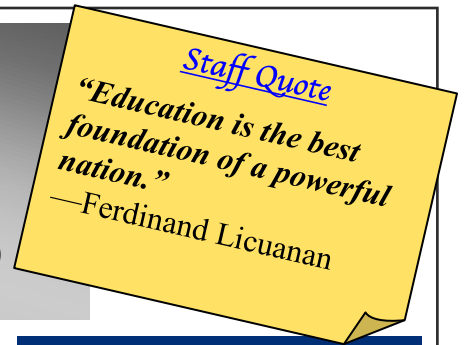
The Comet

The Newsletter of K. International School Tokyo

Volume 18 | Issue 1 | September 2014

➡ In this issue...

- ▶ Welcome to New Staff...p. 3, 4
- ▶ IB Diploma Results...p. 6
- ▶ MYP Next Chapter Changes...p. 9
- ▶ Study Skills Tips ...p. 10
- ▶ LEAP in 2014-2015...p. 13
- ▶ Dengue Fever...p. 14
- ▶ Habitat for Humanity...p. 15
- ▶ Welfare Counseling...p. 16
- ▶ K. International Preschool...p. 17
- ▶ Alumni News...p. 19
- ▶ 2014 University Acceptances...p. 20
- ▶ PTA News...p. 21



From the Head of School

Welcome back from what was hopefully a restful break that allowed for quality time spent with family and friends. September has started and with the Parent Welcome Nights now behind us it feels like we are well on our way into KIST's 18th year.

Many schools find that students seem to have forgotten much of what they have learned upon coming back from an extended break such as summer holiday. However, at KIST things are different. We are very proud to report that our mathematics diagnostic results from August, when compared with those from May, indicate that our students not only enjoyed some time away from school but that they also reviewed math concepts and studied to improve their math performance. All of our August Key Stage test results showed an increased percentage of students attaining at or beyond school expectations. Attaining our goal of 36 points in the DP by 2018 is an ambitious goal that requires the support of all members of our community. I feel that these impressive results reflect strong support from our student and parent community towards attaining this goal – thank you all for your efforts!

Many new and expanding initiatives were announced at the recent Parent Welcome Nights, changes that are sure to make 2014-15 another exciting year for KIST. One such change is increased documentation and policy to support stakeholders in better understanding our expectations and to increase accountability in relation to these expectations. With regards to academics, one such document is the *KIST Progression Criteria and Graduation Requirements*, sent out at the end of last school year through E-Communications (#298 on 06.17.2014) which outlines performance expectations for students in Grades 3 to 12. Academics are a priority at KIST; club involvement is now guided by policy which requires secondary school students to sustain satisfactory academic performance (as measured from the previous semester of study) as a condition for club participation. With regards to student conduct, both on campus and while commuting to and from school, we have introduced a new *KIST Code of Conduct* that clearly defines, and provides reasons for, student conduct expectations. To support us in supporting your child in meeting KIST expectations, I urge you to review the Code with your child – it is contained in the KIST Homework Diary which is distributed to each student. However, please note that the following phrase has been added to the Code since the Homework Diary was published:

Out of concern for student safety and out of respect for our neighboring community members, all KIST students not under parent supervision are expected to return home directly upon leaving the school campus.

Continued on next page

DATES TO REMEMBER



September 2014

- 15 School day
- 15 MYP Information session for G6 and new parents
- 19-20 Staff development days (No school for students)
- 22-23 School holiday
- 24 PYP Information session for new parents (*Evening)
- 25 (W) Free dress day
- 27 (G9-G12) High school drama festival (Hosted@KIST)
- 29-30 School photographs

October 2014

- 5 World teachers' day
- 10 (G5) Day camp
- 13 School day
- 13 (E/S) Field Day
- 15 (G10) PSAT tests
- 18 School explanation day (for prospective parents)
- 20 2015-2016 new enrollment applications open
- 23 Last day of quarter 1
- 24 KISTival preparation day (K1-G5) No school for students (S) School day
- 25 KISTival 2014
- 26-Nov 2 Autumn break



Continued from previous page

Also exciting for KIST is the rapidly changing employment context here in Japan. A recent NY Times article* reported that 48 percent of mid- to large-sized Japanese companies are looking to hire international university graduates, up from 20 percent a few years back. This summer during my visit with family in Canada I was surprised by the prominence of Japanese brands new to the Canadian consumer market including: Daikin, Rinnai, Toto, Calbee, Hisamitsu and Morinaga. KIST graduates, with skills and knowledge from an international education and also Japanese language and cultural proficiency, are sure to draw positive attention from Japanese companies looking to further globalize their business.

The hard work of our graduating class of 2014 resulted in some very impressive Diploma Programme results. 95% of KIST grade 12 students participated in the full Diploma Programme and 94% of those students attained the Diploma. The DP awardee point average for our graduating class increased to 33.4 points. By the end of September you will be able to access more information about our DP results and an updated list of universities to which KIST graduates have gained admission under the Learning > Diploma Programme tab of our school homepage.

KIST looks forward to working with you this year as well towards attaining our school goals and in doing so further increasing opportunities for our students. Once again, thank you for all of your support and please do let us know your thoughts or concerns by contacting the school, or me, directly.

Jeffrey Jones
Head of School



*<http://www.nytimes.com/2014/08/25/world/asia/japanese-companies-seek-international-graduates.html>

K. International School Tokyo provides highly motivated children from **diverse** cultural and social backgrounds with a **high quality** education in a safe and nurturing environment to become **competent** and **moral** individuals who make meaningful **contributions** to our global community.

K インターナショナルスクール東京は、文化的社会的に多様な背景をもった意欲的な子どもたちに、安全で人をはぐくむ環境の中で、質の高い教育を提供し、国際社会に貢献する、人格的に秀でた有能な若者を育成する。

Looking for a tutor?

Have you ever heard of the Khan Academy?

Originally started as a collection of videos by Sal Khan to help him tutor friends and family located all over the US, with financial support from donors, including the Bill and Melinda Gates Foundation, the Khan Academy has grown from its humble roots to become a hub for learning to over 16 million registered users.

For mathematics and science (and a variety of other subjects as well), at levels ranging from elementary school to university, the site offers video tutorials, online practice activities, individual progress statistics, and progress awards – and best of all of these resources are available **FOR FREE!**

So if you are looking for some extra support with mathematics or science, why not check out what those 16 million users are doing by visiting:

<http://www.khanacademy.org>



TAKE JUST A
MOMENT AND
REMEMBER HOW
lucky
YOU ARE

Feeling lucky? Why not enter our draw!

Click on the link below and complete the survey to enter your name in a draw for an IB logo computer case. One entry per person.

Good luck! ☺

[Click here to enter the draw](#)



Welcome to New Staff

On behalf of the KIST school community, we would like to extend a warm welcome to our new staff for 2014-2015. We wish you all the best and hope that you enjoy your time with us!

Teachers



Luke Callaghan
Preschool K3



Florent Debouverie
MYP Japanese



Caroline Jesuthasan
MYP Science /
DP Biology



Emma Justice
MYP/DP Art



Aya Kurosaki
Elementary K1



Paul Martin
MYP Mathematics



Aya Nishihara
Preschool
Nursery /
Art Instructor



Eri Ozawa
Preschool
Head Teacher /
Preschool K1



Kay Shinada
Elementary K3A



Aaron Smith
MYP English /
MYP Humanities



Akiko Takashima
MYP/DP Japanese



Andrew Tulk
MYP Mathematics /
MYP Technology



Ryan Van Loh
MYP Science



Instructors and Assistants



Campbell Boyd
Secondary
ELS Instructor



Thomas Chandler
Preschool Dance
Instructor



Julian Dave
Teacher's Assistant
Grade 1



Makiko Duran
Preschool
Music Instructor



Amber Guarente
Preschool
ELS Instructor K1

Continued on next page

Continued from previous page



Sheyla Mattos
Teacher's Assistant
K2



Angela Oana
Teacher's Assistant
K1



Rosanna O'Connell
LMC Library
Assistant



Natasha Paterson
Elementary
ELS Instructor G1A



Julie Rochefort
Science Laboratory
Assistant



Evan Salzbrenner
Teacher's Assistant
K3



Tamara Somers-Harris
Elementary
ELS Instructor K1



Office Staff



Yukinori Honda
Operations Manager



Tsubura Kobayashi
Office Support Staff



Asumi Moroguchi
Accounts Support
Staff

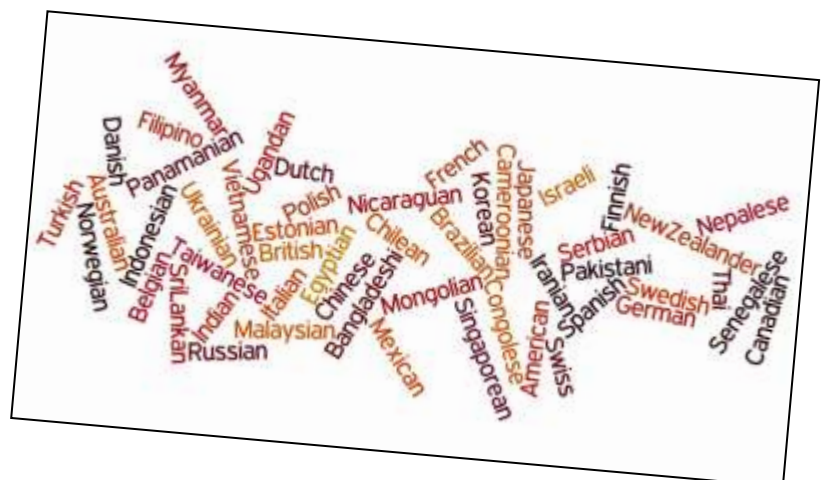


Yukiko Murai Jones
Preschool
Office Coordinator



Student Nationalities

This year, we have a record 51 different nationalities represented in the student body at KIST. Can you find your nationality in the diagram on the right?



Secondary School News



Welcome message from Mark Cowe, the Secondary School Principal!

It gives me great pleasure to be able to write my first Comet article as KIST Secondary School Principal. I hope that the year has started well for your child and they are happy at KIST and learning a lot! Although this is my first year as Secondary School Principal, I am a familiar face to some parents/guardians and I look forward to getting to know more of you as the year progresses.

I want to take this chance to give the community a message that I gave to all the Secondary students at our first Secondary Assembly on Friday, August 22. As I mentioned to parents/guardians at Parent Welcome Night, in this Assembly I told students about the real life story of me and one of my legs being significantly longer than the other! I used this real life example with the students to emphasize the importance of perseverance and determination (I used the phrase "grit" in the assembly) in reaching the goals that we set in our lives and how they will always face challenges and obstacles in their learning. Rather than give up I said that students need to embrace these challenges and obstacles and not be put off or defeated by them. Especially with support, it is amazing what we can achieve. An example of how we embrace this philosophy at KIST is that we have always encouraged all students to take the full IB Diploma in Grade

11 and 12 and last academic year, 94% of our graduating class achieved this goal. Mr Rose and Mrs Okude will have specific articles about G12 IB Diploma results and university destinations later in The Comet. If Secondary parents and guardians have not done so already, can I encourage you to ask your child about the story of my legs!!

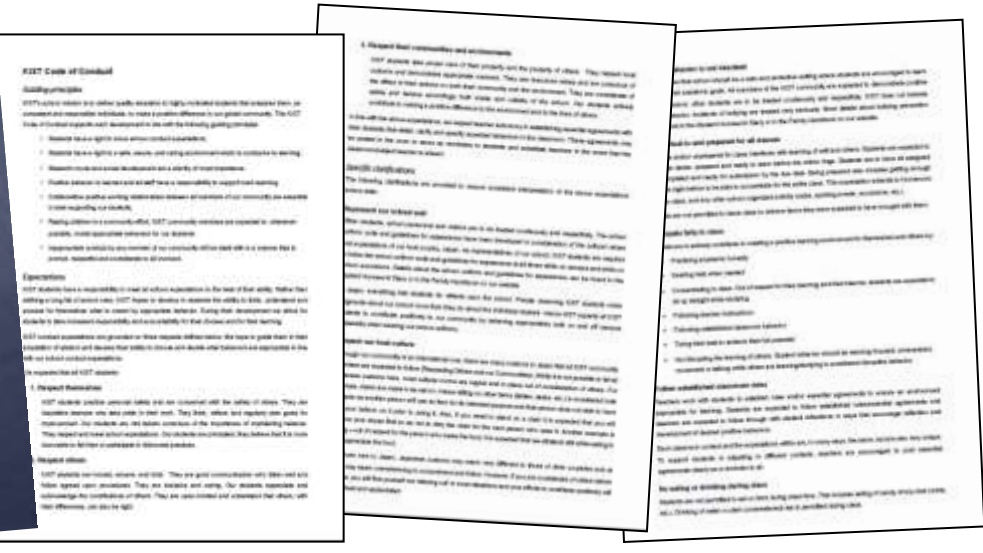
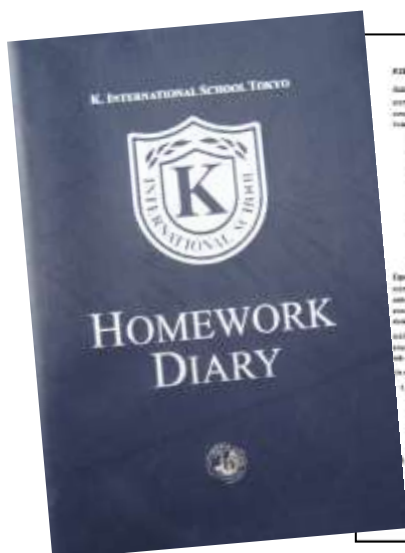
I also want to take the opportunity to communicate to you through this article about some upcoming events and slight changes to our school calendar. This year I have organized some of our Secondary parent information events to be on national holidays and not so late in the day to hopefully allow as many parents as possible to attend. If you could look at our school calendar for the whole year that is on the website and mark relevant dates in your own calendars that would be appreciated. Furthermore, as I mentioned on parent welcome night, overnight camps for certain year groups are firmly back in the school calendar. Grade 11 may have just been on their DP Orientation Camp as you read this, plans are already in full swing on the Grade 7 Camp to the Kamakura area in late November whilst Grade 9 are scheduled to have an outdoor adventure camp either in Yamanashi or Nagano prefecture in May 2015. These are just two slightly new developments

for this year which I hope that the community is positive about. I look forward to hearing any feedback throughout the year.

To conclude this short first message, I want to come back to the concept of support that I made reference to earlier. Over the summer, a lot of work was put into making sure the Homework Diary was up to date and full of relevant information for students and parents/guardians. It also has a new section, the **KIST Code of Conduct**, which clearly outlines the school's expectations for student behavior. Overall our student conduct and dress code is a positive reflection of our community, but it takes a consistent team effort, from homeroom advisors, a principal and parents/guardians to achieve and maintain this, and thus I would encourage all of you, whichever grade your child is in, to look at some of the information in the Secondary Homework Diary as I hope it will clearly outline and explain our expectations.

Thanks for reading this message and I look forward to seeing many of you at our upcoming events this year!

Mark Cowe
Secondary School Principal



DP News

IB Diploma results – July 2014

During the summer vacation, the IB Diploma results were issued to the students of the "Class of 2014". The table below summarizes the performance of the candidates and also KIST graduates from 2011-2014.

Year of graduation	Number of Grade 12 students	Number of students awarded the IB Diploma	Mean points of students awarded the IB Diploma	Highest KIST score*	Worldwide mean points
2014	37	33	33.41	43	TBA
2013	35	29	32	42	29.81
2012	17	14	30	37	29.77
2011	16	14	32	40	29.61

*Maximum score: 45 points

As the table shows, the Class of 2014 was significant for KIST as this year group improved the KIST mean point average well above previous world mean point average scores. Also, 35 students in the year group challenged themselves by going for the award of the full IB Diploma with 33 students (94%) being successful in achieving this goal. Furthermore, the two who were not awarded the full IB Diploma only missed out by one single point. The school compares favorably to world statistics released by the IB in these two categories; just under 50% of IB Diploma candidates go for the full IB Diploma and of those that do, approximately 78% are successful in this goal (IB, 2012).

Also significant for KIST was that amongst the Class of 2014, eight students achieved scores of 39 points or more: **Eun Ji** and **Abhinav** received 39 points, and **Daniel** scored 40 points, with a special mention to **Adam** scoring 41 points, **Min** and **Elizaveta** achieving 42 points and finally **Rio** and **Sashank** scoring an amazing 43 points. Overall, twenty-one students were awarded an IB Diploma with 30 or more points. Ten students were also awarded a **bilingual** Diploma in recognition of studying two language A or "first" languages.

Parents who would like more general information on IB Diploma results should go to <http://www.ibo.org/diploma/assessment/results/>. The IB publishes a "Statistical Bulletin" summarizing IB Diploma results, a link to which is on this webpage. The "Statistical Bulletin" for the May 2014 Examination Session should be published in October/November.

Congratulations to the students on their individual successes in the external DP Assessment and thanks to all the Grade 12 teachers from last year for all their hard work!

Introduction to Creativity, Action and Service (CAS) for Grade 11

Since the start of the school year, G11 students have been finding out what CAS is and how they are to achieve the required goal of 150 hours of activities to complete the IB DP CAS requirements. Students have been shown the process for CAS by:

- Submitting an activity into ManageBac;
- After approval students then conduct the activity;
- During the activity students conduct a log book in ManageBac program;
- Finally, writing a reflection into ManageBac to complete CAS hours.



We also have a new CAS coordinator this year, Shun Nakade. You can see him teaching an introduction to CAS in the photo above.

John Rose
DP Coordinator
john.rose@kist.ed.jp



(IB, 2012) "IB DP Statistical Bulletin May 2012 Examination Session"



Elementary School News

It is my pleasure to extend a warm welcome to each and every K. International School community member as we enter into the 2014 - 2015 academic year.

“*Education’s purpose is to replace an empty mind with an open one.*”
—Malcolm S. Forbes

I find the preceding quote very interesting. Often, when it comes to education, we think about filling the empty mind. Filling it with what? Knowledge? Information? Facts? Now, opening a mind, allowing it to absorb information, process it, and apply skills and knowledge to daily life, this is more challenging, and much more valuable.



Inquiry-based teaching and learning aspires to open minds. The best programs promote the development of Higher Order Thinking Skills (HOTS). Higher Order Thinking Skills, or HOTS for short, takes thinking to higher levels than simply restating the facts. HOTS requires that we process the facts. We must understand them, manipulate them, connect them to each other, categorize them, put them together in new ways, and apply them as we seek solutions to problems.

This diagram shows the different levels of thinking, from the simple to the complex. As students move from elementary school to middle school it becomes more essential for them to have the ability to think in different ways. As children move up from grade to grade, teachers require them to do more and more things with the information that is stored in their brains.



It is our goal to develop Higher Order Thinking Skills in every one of our students at KIST. We look forward to working with all your children in 2014-2015 and opening their minds to all the wonders of the world!

Kevin Yoshihara
Elementary School Principal



PYP News

Concepts as essential elements of curriculum

Studying within an IB curriculum is an exciting and worthwhile adventure. There are many things that separate it from other ways of learning, notably the idea that learning best takes place by building a strong conceptual base of knowledge rather than relying on rote memorization.

Concepts are powerful ideas that have relevance within the subject areas but also transcend them. In order to understand these, students must build upon prior understanding and expand their ability to access these concepts at deeper levels. Structuring curriculum around concepts is important as it focuses on universal and timeless ideas which help students make sense of the world. It helps students organize and retain the important ideas and skills in a discipline and provides coherence to these bodies of knowledge. Most importantly, it moves beyond information to thought and to thinking about one’s own thought processes which actively involves students as doers and problem solvers. This in turn is attractive to students and teachers alike. Another attractive point is that it is attached to the lives and cultures of learners and to the world beyond the classroom door. These real life connections give students the sense of being part of something bigger in their learning and this supports the efficacy of the ideas and skills which are being taught.

Parents might ask which concepts are being taught to support the units of inquiry here at KIST. During the course of the school year, you can expect to see these eight concepts highlighted in your child’s units of instruction: **form, function, causation, change, connection, perspective, responsibility and reflection.** Focusing our inquiry through these concepts will strengthen your child’s ability to negotiate through more than just the lessons at hand but will build a solid base for more broad based understanding of the world of ideas and real life situations.

Clay Bradley
Elementary School Vice Principal/
PYP Coordinator



Grade 5 Art Excursion

Grade 5 kicked off their first art lesson of the year with a field trip to Sompo Art Museum in Shinjuku. The students were given this invaluable opportunity to experience first-hand art appreciation, and for some, this was the first time they had had exposure to art in a gallery space.



The exhibition focused on Kinetic or moving artworks, (many of which were automated for public interaction) and Op art where the illusion of movement is somehow incorporated using various optical and creative tricks. Most of the art works in the exhibition were created by Italian artists in the 1960s. The visit will help springboard our first art project, which will connect with the classroom unit of inquiry "How we express ourselves".



It was a fun afternoon and we were grateful to have the support of the students' classroom teachers, Mr Grant, Mr Archibald and Ms Rachel.



Please enjoy the photos, unfortunately we were unable to capture the students appreciating the exhibits as (understandably) no photography is allowed within the gallery. But hopefully, these few images will give students a happy memory, and others a glimpse of the moment.

Miss Helen
PYP Art Teacher



Elementary ELS

Welcome back, or welcome for all who are just starting at KIST. My name is Rachel Parkinson, the elementary English Language Support (ELS) coordinator. As we start the school year, there are two main things regarding language that are important to emphasize.



First of all, I'm sure you've seen the signs around the school that "We speak English at KIST." English is our common language at school, and our main "language of instruction" (the language that we learn in together for most of our lessons). To include all of our friends in our discussions, our games, and our decision-making, we need to make sure that we are using language that everyone can understand. This means speaking in English (or in Japanese with our Japanese teachers), and it also means teaching each other new words in English (or in Japanese) whenever necessary. Since we all have different experiences, we all have different vocabulary that we do or don't know, so we can always be language teachers for each other. This message about our common language at school is for everyone in our community. Let's make sure we choose the language we use based on the principle of allowing everyone around us to be able to participate in discussions with full understanding.

So that's about language use at school, but how about language at home? Hopefully you picked up the "EAL Family Support" information at the recent Parent Welcome Nights, and many of you will have received it last year also. This document is from a renowned literacy and language educator, Bonnie Campbell Hill. The reason we emphasize this information repeatedly each year is because of the huge difference it can make to your child's progress in language development. Key messages to take to heart are: "Speaking in your native language will *not* make it more difficult for your child to learn English. [...]" Furthermore, learners who have had...no primary language support can take as long as seven to ten years to demonstrate academic competence in a new language." The article then details exactly how you can use your child's first language at home to support their conceptual development and their overall language development. Top tips include listening and talking with your child each day about school in your home language, reading to your child in your native language, and explaining challenging concepts to your child in your native language.

If you didn't receive Bonnie Campbell Hill's document, or if you have any questions about it, please e-mail me any time.

Rachel Parkinson
Elementary ELS Coordinator
rachel.parkinson@kist.ed.jp



MYP News

MYP year begins with changes

The Middle Years Programme at KIST is off to a great start. In class after class, students and teachers are engaged in a rich program of learning designed to help young adolescents gain a better sense of the world and their place in it.



G9 students exploring a poem with Ms. Christian.

Next chapter starts now

The MYP is undergoing a transformation. Beginning this school year, KIST is implementing changes based on an update to the program called the Next Chapter. These changes developed by the IB are in place to allow schools more flexibility to suit the circumstances of their students and their community. You may have noticed some changes already. More will be implemented over the course of the next two years. While the heart of the program – the IB Learner Profile and the commitment to international mindedness – remains the same, there are a number of exciting changes underway:

- **Subject names**

There are several new subject names being used to better reflect the nature of the concepts being studied.

- ⇒ Language and Literature replaces Language A
- ⇒ Language Acquisition replaces Language B
- ⇒ Design replaces Technology
- ⇒ Individuals and Societies replaces Humanities
- ⇒ Physical and Health Education replaces Physical Education

- **Assessment criteria**

To help students, teachers and parents to have a better picture of student success, all subject groups are using four assessment criteria. These criteria are all assessed out of eight points. While subject groups have used assessment criteria that best suit the nature of the disciplines being studied, this alignment across the program will allow for a more transparent view of how students are performing throughout the MYP.

- **Global contexts**

MYP units used to refer to Areas of Interaction. Starting this year, MYP units will explore six global



G6 Individuals and Societies unit poster.

contexts. These broad categories, ranging from personal identity through to globalization and sustainability, offer a framework to allow for learning to make connections across a wide range of concepts and subject content.

- **Professional development**

September 19 - 20 will see all MYP teachers participating in a workshop on the changes in the MYP. Mr Quincy Kameda, an experienced IB workshop leader from here in Tokyo will guide teachers as they continue to revise their programs to meet the requirements of the Next Chapter changes.



G6 students learning how to spike from their G10 peer-coach.



Mr Lee leads a combined G6 and G10 PHE class as they practice their skills.

Continued on next page

Continued from previous page

A new MYP Coordinator



Mr Rob White has taken on the role of MYP Coordinator starting this year. Mr White is in his fourth year at the school, and he is working with teachers, students and parents to help the KIST community take advantage of the demanding MYP program. Mr White will be leading MYP information sessions for

parents throughout the year. The first of these will take place on **Monday, September 15 at 3:00 p.m. in the MPR**. This session is aimed at parents and guardians of Grade 6 students and those whose sons or daughters are new to the school this year. Another session on November 3 will explain the MYP Personal Project for parents with students in Grade 10, the last year of the program.

If you have any questions about the MYP or would like to learn more about the changes to the program, please contact Mr White by e-mail at:

robert.white@kist.ed.jp



G6s practicing spiking during PHE class.

Explanation Day 2014

For the 2015 - 2016 school year

KIST will hold an Explanation Day for parents interested in enrolling children for the 2015 - 2016 school year.

Administration and teaching staff will be available to answer questions regarding admissions procedures, the school curriculum, progression to universities, and general features of the school. Visitors will also be able to view the school facilities.

Date:

October 18, 2014 (Saturday)

Session times:

- (1) English: 9:45 a.m. - 12:00 p.m.
- (2) Japanese: 1:15 p.m. - 3:30 p.m.

Reservations close:

October 17, 2014 (Friday)

Reservations essential!

www.kist.ed.jp

Study Skills Tips

Thinking ahead

Are you riding a rollercoaster at school? Rollercoaster study is where you stay up late doing last minute assignments, then you take it easy for a while and do very little, then panic again when something is due and have to spend huge amounts of time at the end completing the work. If you plan ahead and are prepared, you will find school much less stressful and more rewarding.

Here are the top tips for thinking ahead:

1. **STUDY NOTES:** If you know that you have a test at the end of each topic or examinations approaching, then on the nights you do not have much homework start working on your study notes and summaries. File them in folders at home so they are ready to go when you need them.
2. **ASSIGNMENTS:** Always start the assignment the day it is given to you, even if it is just a little bit. Make sure you understand the requirements and if you don't ask your teacher straight away the next day. Brainstorm the steps the first night and do a rough plan of when you will do each step.
3. **ASK FOR HELP EARLY:** There is nothing more frustrating than a student who says 'I haven't understood anything we did in the last 3 weeks'. Ask for help as soon as you have a problem. Keep a list of questions for your teacher on a post-it in your textbook or sticky notes on your computer or a list in your phone. Don't let problems or issues build up, ask for help early and often.
4. **THINK ABOUT WHO YOU SIT NEXT TO:** Choose wisely who you will sit with in class. This can make a world of difference to your results. If you sit with someone where it is a productive relationship, you encourage and help each other and stay on task in the classroom you will understand your work better and have less to do at home.
5. **CONSIDER YOUR WEEK:** Plan ahead for busy times. If you know you have nights where you can't do much work or a busy weekend, plan ahead and get things done early. Always look ahead for possible times where you could be caught short of time and make plans to avoid problems.

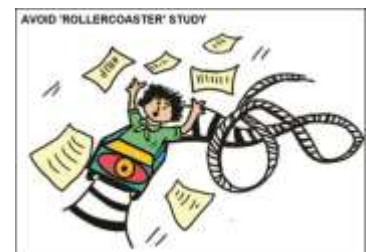
Learn more this year about how to improve your results and be more efficient and effective with your schoolwork by working through the units on:

www.studyskillshandbook.com.au

Our school's access details are accessible on our Moodle site at:

<https://moodle.kist.ed.jp/course/view.php?id=30>

Jeffrey Jones
Head of School

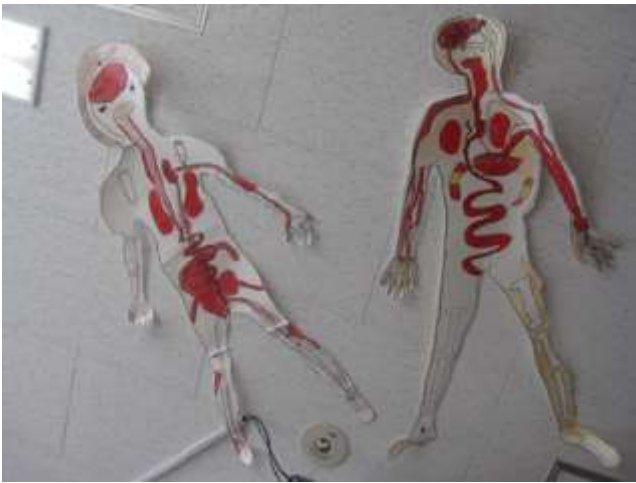


Bodies in Grade 3

Lions and tigers and *bodies*....oh my!

For the unit, Who We Are, G3 students are exploring five of our body systems: the respiratory, digestive, circulatory, skeletal and nervous systems. For one of their "tuning in" activities, the students used their previous knowledge to create their very own bodies, complete with organs such as the brain, heart and intestines.

Care for a gander? Pop into one of the G3 classrooms, and look up at the ceiling, where these creative (and somewhat accurate) body representations are "living."



Office Updates

School ID cards

School ID cards are issued to all students from G1 to G12 and to all parents (one per family). The cards contain a delicate electronic chip that may be easily damaged if not cared for properly. **We strongly recommend that you keep your cards in hard plastic cases to protect them from damage.**



Cards must be scanned at the school gate every time you pass through regardless of whether the gate has already been opened or not.

Parents are asked to please be sure to bring the parent card and scan it at the gate at all times when visiting the school to complete SSP duties, attend information sessions etc.

It is important to ensure that the cards scan correctly when entering and leaving the campus. **If your card is in a case with other electronic cards (e.g. Pismo, Suica), it will not scan correctly**, unless it is kept in a case especially designed for multiple electronic cards.

When the cards are correctly scanned, you will hear a short "beep" sound. If the card does not scan correctly (i.e. there is no beep sound), your entry and exit times will not be recorded and we will be unable to verify your presence on campus.

If your card does not scan correctly, please take it to the main office. If the electronic chip has been damaged, the card must be re-issued.

School fee payments

PAID Just a reminder that the due date for the 2nd installment of school tuition fees is September 16. Have you already made your payment? The due date for the 3rd installment will be December 15. Please make a note of this date.

Changes to school lunch orders

Join Me For Lunch If who wish to make changes to your child's school lunch order for the period from January 2015, please submit the **School Lunch Order Form** (available on the school website Community >> Forms page) to the office by **Friday, December 12, 2014**, the last day of school prior to the winter vacation. If no form is received, your lunch order will continue and you will be invoiced as appropriate.

Please be aware that the school office is especially busy at certain times of the day. If you choose to pay by cash, it is possible we may keep you waiting for a while. To avoid waiting, we recommend that you make payments by bank transfer.

Library News

New school year! New library activities ahead!

New staff

As we begin the 2014-2015 school year, KIST Libraries would like to introduce our new library assistant in the LMC, **Rosanna O'Connell**.



Just to give you a bit of information about me. My mother is Japanese and my father is Irish but I was born and raised in London. I came to Japan at the end of December 2013 and have been living here with my husband ever since. I have many different hobbies but to name a few, I love traveling, playing badminton, visiting art museums, singing karaoke and baking. I'm very excited and thrilled to be part of the library team at KIST. I'm looking forward to meeting you all and getting to know you. We have many new items in the library this year so visit us sometime in the LMC.

Current events at KIST Libraries

We are starting the new school year off strong with the return of **Yatta! Cards** and **Hungry Readers booklets**. Yatta! Cards are awarded to students by teachers for exhibiting learner profile traits in and out of class. Students can also earn Yatta! Cards by completing Hungry Readers booklets, available on the library desks. Students may submit one booklet for every three books they read. One booklet equals one Yatta! Card. The more books, the more Yatta! Cards, and the more chances to win fabulous prizes from KIST Libraries. Submit your Yatta! Cards and Hungry Readers booklets to the library on or before **September 26** for a chance to join the raffle.



Due on
Sept. 26th



Look out! Upcoming activities at KIST Libraries

- ◆ September 26 – Yatta! Card Raffle Draw
- ◆ October 22 – Due date for Shelfie Entries
- ◆ November 4 – Book Character Parade
- ◆ November 5, 12, 19 & 26 – DEAR Times

This year, we will see the return of **DEAR (Drop Everything And Read)**. The whole school will "drop everything and read" once a week during November, and we mean everybody: students, teachers, visiting parents, even the principals will take some time out of their busy day to enjoy a good book, magazine or newspaper.

To kick off this exciting event, the Elementary School will host the annual **Book Character Parade**. Students and teachers are invited to dress up as their favorite book characters to celebrate a love of reading. Grade 4 and 5 students can enter into our Book Character Dress-up Competition for a chance to win. New this year, your teachers will have a chance to compete, too! Let's see your creativity in bringing your favorite book characters to life!

In the Secondary School, students can submit a "**Shelfie**" for this year's iCapture competition. Take a photo of yourself and your favorite book. Be creative! We look forward to seeing your "**Shelfies**" and the best ones will win a prize. Email your Shelfie entries directly to Mr Andi on or before **October 22**. Watch out for more information on our Daily Notices and Library Moodle pages.

Correction

In our last article, there was an error on the Sakura Medal art entries of secondary students. This art work was originally created by **Aishwarya** who is now G12B. KIST Libraries apologizes for this oversight.



Library online services

When you think of KIST Libraries, what do you think of? Books? Of course, we have plenty of books, and lots of new titles for you to read, but did you know that some KIST Library services are available 24 hours a day, 7 days a week? It's true!



Anytime, anywhere, you can visit the Library Moodle page to access great informational resources. We have **BrainPop** videos, **Britannica School Edition**, **Kids InfoBits**, **Opposing Viewpoints** about controversial topics, and more. You can access it from

home, at school, or anywhere in the world – although we don't recommend doing your projects the night before they're due.

With so many exciting things going on at KIST Libraries, sometimes it seems like a lot to remember. Please feel free to drop by the Elementary Library or LMC any time to ask your librarians if you have any questions. Remember! "**Library is an extension to every classroom**". You can also email us at library@kist.ed.jp. We are happy to help you.

The KIST Libraries Team

LEAP in 2014-2015

At KIST, we believe that academic success is enhanced by the development of skills in language and mathematics, the vital foundation upon which all other subjects are built.



We provide many different kinds of lessons to help support students in a way that is suitable for their learning needs and requirements. LEAP, the Learning Enhancement Academic Program, has had some

exciting new changes again this year and I'd like to take this opportunity to explain them in detail.

Introduction of morning LEAP classes

In order to provide support for as many students as possible, we have decided to open up the following classes in Period 0 (8:10–8:40 a.m.):

- **Elementary Before School English Support Program (K1-G5)**

Students are taught in small groups by their grade's ELS instructor in 30-minute mini-lessons that are both based on the class content and in line with the Key Stages. Having shorter lessons several times per week ensures that students have regular practice in order to more quickly develop appropriate language skills.

Recommendation letters are sent at the start of each semester, and students who receive a recommendation are given preferential entry into the class. Other students may also apply, but only students who require English language support are accepted.

- **Secondary Academic Writing Program (G6-G10)**

The overall aim of this class, is to develop understanding of essay writing in various academic settings, and improve students' academic writing skills. Students enrolled will develop their ability to write academically and improve across the curriculum.

The program is aimed at students who are currently in Intensive English or Language Acquisition classes, and those who have recently moved from IE or Language Acquisition into English A Language and Literature; however, it is open to anyone who would like to improve their academic writing skills.

After school classes

- **Elementary After School Math Support Program (G2-G5)**

This program is designed for students who are struggling with math. We recommend that you take advantage of this program to build a strong foundation for your child's math ability.

Recommendation letters are sent at the start of each semester, and students who receive a recommendation are given preferential entry into the class. Other students may also apply, but only students who require math support are accepted into the class.

- **Elementary After School English Extension Program (K3-G5)**

This program is designed for students who are meeting or exceeding grade level expectations to extend their learning beyond the classroom. Classes are linked to classroom content, but students are pushed further to use critical thinking and practice their academic writing skills.



- **KIPS LEAP Program (G2-G5)**

As many of you will know, 2014 marks the opening of the new "K. International Preschool (KIPS)". KIPS will be hosting a variety of new fun educational programs for students in G2 to G5. Information will be coming in the next few weeks so keep an eye out on the LEAP website!

LEAP surveys

I would like to take this opportunity to thank all of the parents who participated in our LEAP surveys at the end of last year. From the surveys, we were able to recognize 2 main expectations from parents.



Firstly, parents wanted to know more about what was being done in Elementary LEAP classes. To meet these expectations, Elementary LEAP will now be providing simple portfolios that display students' work done throughout the semester. This way parents can see both what is being done in class and the progression of their child's English/math level. Portfolios will be sent home at the end of every month for a weekend.

The other area that parents commented on was homework. Parents wanted to receive specific LEAP homework for the classes. From this year we will be giving homework as is appropriate for the age group. It is an expectation for students enrolled to finish their homework in a timely fashion.

- K1-K2 will only receive homework occasionally at the instructor's discretion.
- K3 will receive homework once a week, plus anything that is not finished in class.
- G1-G5 will receive homework 1 to 2 times a week, plus anything that is not finished in class.

The surveys are still open, so if you would like to comment on anything, please feel free to have a look.

The LEAP instructors and I are very excited about the coming year ahead. If you have questions about any of the LEAP programs, please do not hesitate to contact me.

Anna Holdaway
LEAP Coordinator
anna.holdaway@kist.ed.jp



Staff 10!

In this month's *Staff 10!*, we are pleased to present **Julia Lupone** who joined us in 2012 as a Grade 3 teacher in the Elementary School.

- **Tell us something interesting about your hometown.**

Haha....which one? Similar to many of the students here at KIST, I am the product of an international lifestyle and have spent some time living on various parts of the globe. Here are some interesting facts about some:

Ipswich, England – where the world's first commercially marketed powered lawnmower was built in 1902. / **Berlin, Germany** – where I witnessed firsthand, the fall of the Berlin Wall on the night of November 9, 1989. / **Blacksburg, Virginia** – home to one of the oldest rivers in the world – the New River. It's also one of the few rivers in the world that flow south to north. / **Pittsburgh, Pennsylvania** – home to Heinz ketchup, the birthplace of the banana split and the city possessing more bridges than any other in the world. / **Malta** – According to the Bible, St. Paul was shipwrecked here in 60 AD. / **Tokyo, Japan** – This is my third time living here and I still am not fluent in Japanese...

- **What is your favorite place in the world?**

Madeira, Portugal and St. John, U.S. Virgin Islands – both perfect island combinations of beach and hiking – two of my favorite outdoorsy activities.

- **Who would you like to meet if you had the chance and why?**

Theodor Seuss Geisel – "Dr. Seuss" – It would be wonderful to speak with him about how he created his books and where he drew his inspirations, characters and illustrations from.

- **Do you have any special skills or talents?**

I am not sure if these qualify as skillful or talented, but I very much enjoy both dancing and cooking (...and sometimes simultaneously, which may very well be considered a talent ☺).

- **Please share a little known fact about yourself.**

"Lupone" is an Italian name that means "great wolf" and is actually my maiden name. My married name is "Welsh," but I did not have the time to change it before moving to Japan two years ago.

- **What is your most prized possession?**

Not so much a "possession," but I treasure my family the most. After moving from place to place, I have lost, left behind, and stored away most of my possessions. My husband left behind his, as well, and followed me to the other side of the world. My parents supported and guided me when I needed it most and these qualities make my family way more "valuable" than any physical possession.

- **What words would you use to describe yourself?**

Creative, honest, determined and dependable.



Sea, sand, palms and...
Ms Lupone.

- **If you could live your life again, would you do anything differently?**

No, for the most part, if we didn't make mistakes in our lives, we wouldn't be able to learn from them. My mother-in-law shared this mantra with me; "Grant me the serenity to accept the things I cannot change; the courage to change the things that I can; and the wisdom to know the difference." I am learning to live by these words.

- **Is there anything you are trying to learn/improve about yourself at the moment?**

To focus on the present – and to live each day to the fullest. It is all too easy to anticipate what is coming next and/or to regret things that have happened, after the fact.

- **Do you have any special message for your fans?**

Carpe Diem ☺



Nurse's Notes

Dengue Fever

A number of cases of Dengue Fever were reported in Japan at the end of August 2014. The majority of these were caused after being bitten by mosquitoes in Yoyogi Park. Dengue Fever is a kind of tropical infectious disease caused by the dengue virus which is transmitted by mosquitoes. It is not transmitted directly between humans. Symptoms include sudden high fever, articular muscle pain, nausea and vomiting, and a measles-like rash that appears on the face and hands 4 to 8 days after the incubation period. After a while, the fever abates, and in most cases, recovery is smooth. The death rate is a low 1 to 2%, and it is said that 80% of those infected with the virus do not develop any symptoms.

On September 4, 2014, the Tokyo Metropolitan Government announced the partial closure of Yoyogi Park in order to prevent the spread of infection. The section closed is Area A where the main plaza and fountain are located. Along with this closure, the cycling center, the car park and the shop in Area A have also been closed. A number of other parks around Tokyo have also been closed or partially closed.

Measures to be taken at home to prevent being bitten by mosquitoes include using insect repellent, wearing long sleeve shirts and long pants, using insecticides, and removing any water left outdoors (such as abandoned tires etc.).

The active period of the Tiger mosquito (*Aedes albopictus*), the mosquito responsible for transmitting the virus, is until around the end of October, and as the mosquitoes are not able to live through the winter, the dengue infection in Japan is thought to be transitory. As such, there is no need to be overly concerned.

Makiko Whittaker
School Nurse



Habitat for Humanity

What is Habitat for Humanity?

Habitat for Humanity is a non-governmental organization founded in 1976, which operates all over the world. Their aim is to build "simple, decent and affordable" houses and to protect human rights. There are various on-going programs conducted by Habitat but the more familiar one and the one we went on was the Global Village program. Students from around the world travel to different locations where Habitat operates and with the help of volunteers from Habitat itself, they help build new homes for families who are in need.

Habitat's overall vision is: **"A world where everyone has a decent place to live"**.

What did we do?

In preparation for the 2014 Habitat for Humanity, the students created two fundraisers in order to earn money for the trip. The first fundraiser was a hotdog sale during the information session for parents who are interested in enrolling their children in KIST. The second fundraiser was during KISTival. This fundraiser had different sections—the pastry decorating, the arts and crafts, and the bald voting. The trip itself consisted of working days, where we actually built the house and orientation activities through which we got to know the culture more and relax. The weekdays were mainly when we worked in two groups, as we built two houses. Every day we all got into a van to our destination, were given instructions as a whole group, and went to our own individual groups for work. The work consisted of very physical work such as: loading bricks, building walls, digging holes and making framework for approximately 6 hours. Though with the help of local workers this was done smoothly, and lunch after work was always the best. There was a lot of interaction between the students, teachers and the family owners, which really pulled us together.

Orientation activities were held on the weekends, shopping, hanging in our hotel pool and Lake Toba was one of the highlights. The environment was beautiful and felt as if we were in a resort relaxing ourselves from the hard workdays. Banana and speed boating was one of the activities the group agrees was very enjoyable. However, going back to work and seeing the kids' smiles could not have been beaten by anything.



Dedication ceremony



The team from KIST

Thoughts on the experience



Rina (G12B): "Being part of Habitat for Humanity was one of the best life experiences I've ever had. Not only did we contribute to the Indonesian community and help build a house, but also we got to know the people there and learn their culture. This made my volunteer work much more meaningful because I grew to love the family we were building the house for. Even though most of our Habitat trip consisted of us working for hours a day, we also got the opportunity to explore Indonesia and its culture by eating the local food and going shopping! It was an amazing life-changing experience!"



Kanoka (G12A): "This trip encouraged me to appreciate every single thing around me, and not to take anything for granted. I really appreciate the opportunity to be able to contribute to such a wonderful trip with the amazing team."



Anna (G12B): "This Habitat for Humanity trip was a very special experience for all of us. Building a house in a foreign country was definitely challenging, but we were able to look into the lives of the Indonesian people, who live in a different environment to us, and learn about their culture. I feel like the trip allowed all of us to build a stronger relationship with each other and it also helped us develop as individuals. Everything about the trip was perfect, and I couldn't have asked for a better team."

Continued on next page

Continued from previous page



Vigi (G12B): "This was a very memorable trip. Just the fact that we were able to make a difference in someone's life is something I am really proud of. It exposed me to the outside world even more and made me understand how easy my life is (despite IB) compared to how hard they work for a one time meal."



Prakhar (G12B): "As humans we embark on innumerable journeys in our lifetime— be it our daily commute or a planned family vacation. The word 'journey' can be interpreted in two different ways: a trip from one place to another or a process of personal development. There are only a few journeys in our life that manage to touch us on the deepest extent of both of these meanings. There is no doubt that our Habitat for Humanity trip to Indonesia was one of them. We departed Japan as students in support of a humanitarian cause; we arrived in Japan with an expanded view of our quintessential, human scopes."



Site 1, Day 1



Welfare Counseling

Welcome to the 2014-2015 academic year. It has been a few weeks since the year has started and I hope that everyone has settled in well.

This year, I will be sharing my counseling role with Mr Clay Bradley, our Elementary School Vice Principal. Mr Bradley will be working more closely with Elementary students and I will be working with Secondary students.

In this issue, I would like to explain what my role is and how students can access the counseling service at KIST.

What do Student Welfare Counselors do?

The Student Welfare Counselors support students' social, emotional and academic needs. If students have problems or concerns, counselors listen to them and try to come up with solutions with the students.

Students may want to meet with the counselor if they:

- have a hard time making friends
- feel reluctant to go to school
- feel depressed and restless
- have concerns about their family

Keeping your problems and concerns to yourself may affect your physical and mental health. Please encourage your child to speak to his/her family, friends, teachers or other people around him/her.

How can students access the counseling service?

Secondary students can visit the Welfare Counselor's office anytime during lunch time. The office is located on the 3rd floor of the main building. Students who prefer to speak with the counselor outside of lunch hours may make an appointment by e-mail at nanami.komaki@kist.ed.jp or ask me directly. Students are also welcome to visit the Welfare Counselor's office during lunch time for a casual chat.

If you have any concerns about your child, please do not hesitate to contact me and share them with me. I look forward to working with all the members of the KIST community this year.



Nanami Komaki
Student Welfare Counselor



K. International Preschool Opens!

We are pleased to announce the opening of K. International Preschool (KIPS) at Nihonbashi-Hamacho. Thanks to the hard work of all the staff, all the classrooms have been fully furnished and decorated inside and out to welcome 2 to 5 year old children. The KIPS program is designed to prepare children to be successful when they enter the school system at KIST, or other international schools.

Children are provided with a solid foundation for lifelong learning and help to develop a positive attitude towards learning experiences. Fun and engaging activities achieve curriculum-focused learning objectives such as early numeracy skills, color and shape recognition, fine motor skills, and crucial early literacy skills. Students will also learn logical thinking skills, technological literacy, vocabulary development and social skills, and can also enjoy art, music, hip hop and dance classes.

The program has been well received by students, parents and teachers alike. Furthermore, from the middle of September, our LEAP program will offer even more enjoyable experiences for our students to attend. We look forward to also greeting KIST students at KIPS.

For more information on K. International Preschool, please visit our website.

<http://www.k-preschool.jp/en>

KIPS Staff



College Guidance News

I would like to take this opportunity to share with you some exciting news that we received at the College Guidance Office during the summer vacation.

The Class of 2014 final destinations by country:

- 33 out of 37 graduates applied to colleges/universities during G12
- 27 enrollments for August/September/October 2014: USA: 10; Japan: 7; UK: 5; Canada: 4; Australia: 1
- 7 graduates applied to colleges/universities after graduation: Japan: 3; Korea: 2; Australia: 2
- 3 graduates will take a gap year

90% of the Class of 2014 applied to colleges and universities during their G12 year and more than 80% decided to enroll in the freshman year at one of the colleges/universities from which they received offers from this academic year commencing from the end of August, September or October.

As you can see in the table above, the USA was the most popular destination for the Class of 2014 followed by Japan, the UK and Canada. Due to the different admissions calendar in some countries in the Asia-Pacific region such as March intakes in Australia and Korea, and April intakes in Japan, several students sent their applications after graduating from KIST. During summer, one of the students received offers from two medical schools in Korea: Yonsei University and the Catholic University in Korea, and decided to go to Yonsei Medical School from next March. Please check the latest list of acceptances and offers for the Class of 2014 on page 20.

Special admission for IB students has commenced in major Japanese universities

Although Japanese universities have become very popular among KIST students, students' options were limited previously to only a small number of courses taught in English. If they wanted to apply to a regular program taught in Japanese, they usually had to sit an entrance examination such as the "Center Shiken" organized by the National Center for University Entrance Examinations for Japanese nationals and "EJU" by the Japan Student Services Organization for non-Japanese nationals and/or original entrance examinations at each university. Those entrance examinations are fully compliant with the Japanese high school curriculum authorized by the Japanese government which is significantly different from the IB curriculum offered at KIST. Therefore, our students had to spend extra time to prepare for the Japanese entrance examinations after they graduated from KIST. Thanks to recent movements, however, recognition of IB education amongst the Japanese education community has increased, and several established Japanese universities have started special admissions for IB Diploma students. For

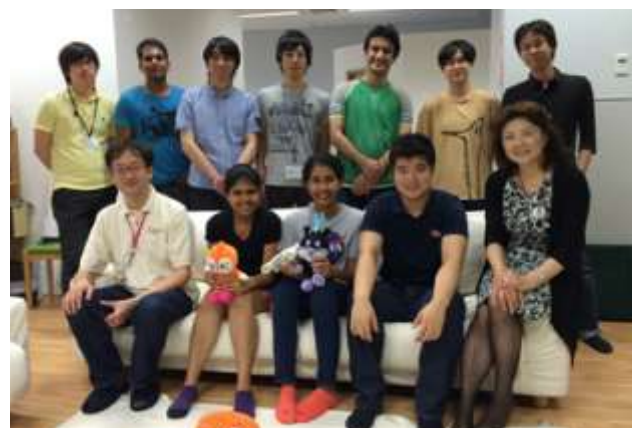
example, one of the top government schools, University of Tsukuba, announced that it will offer the Global Entrance Examination to IB students for admission to all departments, including its medical school, from April 2015 intakes if they meet the requirements; for example, Japanese native speaker or those taking Japanese B High Level and Mathematics High Level as well as at least two High Levels in Physics, Chemistry or Biology for Medical School. Another government school, Okayama University, also introduced an IB AO (Admissions Office) Entrance Examination for all departments, including its medical school, with the requirement of Japanese A and at least one High Level subject from Mathematics and two sciences in Physics, Chemistry and Biology. Similar admissions have commenced among private universities including the Faculty of Law at Keio University, College of Business at Rikkyo University, and all programs at Musashino University and Tamagawa University. As this trends seems to be continuing, more and more options are expected to become available for IB students in Japan.

KIST has become an SAT Test Center

Good news for our students who will send their SAT scores to universities as part of their applications. Students no longer need to travel to other schools but are now able to take the test at KIST by simply selecting KIST as a test center when they register through the SAT website. If you have any problems reserving a seat at KIST, please e-mail Mrs Okude.

Summer internship at Keio University

Once again this summer, three students from KIST completed an internship at the Graduate School of Media Design, Keio University (KMD). **Tatsuya (G12A)**, **Aishwarya (G12B)** and **Keerti (G12B)** spent several weeks with graduate students and enjoyed participating in special projects with their mentor Masters and Ph.D students under the supervision of Professor Masahiko Inami, Associate Professor Kouta Minamizawa and Project Assistant Professor Yuta Sugiura in the labs at Keio Hiyoshi campus and Odaiba Miraikan.



Continued on next page

Continued from previous page

Upcoming events

College Fairs (open to the public)

- Saturday, September 13, 12:30-17:00, **America Expo 2014** (Akihabara UDX Gallery)
<http://americaexpo.jp>
- Tuesday, September 16, 18:00, **Brown University and University of Pennsylvania** (ISSH)
RSVP:
<https://key.admissions.upenn.edu/register/tokyo>
- Sunday, October 12, 11:00-18:00, **Study in Australia Fair 2014** (Ochanomizu Sola City Hall)
<http://afuee.jp>
- Saturday, October 25, 13:00-18:00, **Education UK Exhibition 2014** (Akihabara UDX Gallery)
<http://education-uk-fair.jp>
- Sunday, October 26, 13:00-18:00, **beo International Education Fair** (Shinjuku L-Tower)
<http://www.beo.co.jp/fair/english/index.html>

College presentations at KIST (LMC)

(for KIST students and parents)

- Thursday, September 19, 3:45, **Northeastern University, University of Colorado Boulder, University of Iowa and University of Missouri** (USA)
- Tuesday, October 7, 3:45, **Hendrix College** (USA); **Laureate Hospitality Education** (Switzerland)
- Thursday, October 9, 3:45, **Queensland University of Technology** (Australia)
- Friday, October 10, 2:45 (G11 Advisory), 3:45, **The Cooper Union** (USA)
- Wednesday, October 15, 3:45, **SCAD: the University for Creative Careers** (USA)
- Thursday, October 23, 3:45, **University College London; SOAS University of London** (UK)
- Monday, November 3, 2:45, **Pratt Institute; Suffolk University** (USA)

PSAT at KIST

(compulsory for G10 and optional for G11)

Wednesday, October 15 during school hours (see more details in the PSAT letter)

Mrs Keiko Okude

College Guidance Counselor

Office hours: Mon, Tue, Thu, Fri 10:00-17:00

keiko.okude@kist.ed.jp

Alumni News

KIST alumni talks

Airi (Class of 2013) visited KIST on Tuesday, August 19 to share her experiences at Groningen University in the Netherlands with G11 students during Advisory class. Airi is studying Psychology and successfully completed her freshman year in this rigorous program (nearly one third of students dropped out!). She talked about the admissions process for the university and her exciting new life both on and off campus.

Rishab (Class of 2013) visited G11 Advisory class on Friday, September 5 to conduct a presentation about London School of Economics and Political Science where he is studying for his BS in Business Management. He talked about the IB requirements for this top UK university according to his own experience during G12 and the summer 2013 after his graduation, as well as his busy college life in central London.



Rishab

Thank you Airi and Rishab. We wish you all the best in your college lives!

Carmina (Class of 2010)

graduated from Princeton University on June 3, 2014 with a BS in Engineering (Operation Research and Financing). Her thesis was awarded the *Admiral Angus W. Mack Memorial Prize Award*. She is currently working as an analyst at BlackRock in Wall Street, NY. She has already been admitted to the MBA programs at Yale University and MIT and is planning to attend one of these within two years. Congratulations Carmina!



Carmina

Mrs Okude's visit to NY and Princeton



Chaitanya

During the Golden Week vacation, I had the chance to visit NYU and Princeton University and had a wonderful time catching up with **Chaitanya (Class of 2013)** at NYU and **Carmina (Class of 2010)** at Princeton University.

Mrs Keiko Okude

College Guidance Counselor

keiko.okude@kist.ed.jp



University Acceptances for KIST Graduating Class of 2014

UK

Ashton University
 Durham University
 King's College London (2)
 Kingston University
 London School of Economics and Political
 Science
Queen Mary University of London (2)
 Roehampton University
University of Birmingham
University College London (3)
 University of Edinburgh (3)
 University of Exeter
 University of Leeds
University of Liverpool
 University of Nottingham
 University of Surrey
University of Westminster
 University of West England, Bristol

USA

Birmingham Southern College*
Boston College*
 Boston University*
Florida Institute of Technology*
George Washington University* (2)
Lynn University
Midwestern State University*
New York University*
 Northeastern University* (4)
 Pacific Lutheran University* (3)
 Pennsylvania State University
 San Jose State University
Soka University of America*
 Syracuse University
 UC Santa Cruz
 University of Hawaii at Manoa
 University of Iowa

University of Oregon* (3)
 University of Wisconsin, Madison

Canada

University of British Columbia* (7)
McGill University* (2)
 Mount Allison University*
 Simon Fraser University
 Trent University*
 University of Northern British Columbia
University of Toronto*
 University of Victoria*
 York University

Japan

Akita International University
 International Christian University (2)
 Ritsumeikan Asia Pacific University
 Sophia University, Faculty of Liberal Arts (6)
**Waseda University, Advanced Science
 and Engineering** (2)
**Waseda University, Political Science and
 Economics***
**Waseda University, School of Liberal
 Studies** (4)

Korea

Korea Advanced Institute of Science and
 Technology
 The Catholic University of Korea, School of
 Medicine
Yonsei University, College of Medicine

Hong Kong

University of Hong Kong

Australia

Sydney Institute of TAFE

* Indicates universities from which scholarships were also offered.

(The number of students accepted is in parentheses)

Red indicates universities where students will enroll from fall 2014 or spring 2015.

PTA News



We are KIST PTA!!!

Your participation and involvement over the past years has enabled us to hold countless events and provide valuable support to our school.

Your continued cooperation and understanding is truly appreciated.

Members of this year's Executive Committee are as follows:

President
Mika Shindo



Co-Vice Presidents
Jun Hirano
Shinichiro Kawamatsu



Treasurer
David Halphen



Secretary
Jessica Suzuki



This is also the first year since our PTA's establishment that we have seen so many new faces in our Executive Committee.

While we are just getting started and still have a lot to learn, we are all committed to building a thriving school community and enriching our children's educational experience.

The motto of this year's PTA is "simple and fun."

We hope you will consider joining us as we work to create even better events and make further improvements to our school environment.

If you're interested in getting involved, please e-mail us at pta.executive@family.kist.ed.jp. We continue to recruit members to join our various committees, and look forward to your active participation.

Mika Shindo
PTA Executive Committee

Library Committee News Fall 2014

This year we are promoting **Parents in the Library** because:

- Older children (ages 10-16) pick up reading habits from watching their parents read;
- When parents read books for pleasure, older children often read more;
- When older children read books for pleasure it has a positive impact on their vocabulary development.

Please come and check out books for yourself to read from either library. Parents may check out up to 10 books under their child's name. Please visit the libraries between the hours of 3:40 to 5:00 p.m. on Tuesdays to Fridays, since student needs come first during the school day. If you are waiting to pick up your child from after-school club activities or LEAP classes or happen to be on campus after school, stop by either of the libraries to browse or just to say hello. Elementary students must be accompanied by a parent while in the library after school.

You can search for your favorite book, author or subject by accessing KIST's electronic card catalogue from your smartphone, tablet or personal computer:

KIST website >> Links >> LMC Quick Links
<http://www.kist.ed.jp/node/294>

After accessing the page, type in author, subject, or title in the Destiny Web Path Express box and tap 'Search'.

Of course the popular Scholastic Book Club will continue. For every book that you purchase, the school receives funds to purchase additional books for both libraries.

If you would like to learn more about the Library Committee, please contact Rebecca Yarita at p-1022@family.kist.ed.jp to be added to the distribution list. You will receive updates throughout the year on activities and events that directly support both libraries. Please feel free to join us anytime by email or in person.

A huge thanks to the KIST Community for your continued support of the libraries.

Let's read!

Rebecca Yarita
Library Committee Chair, G7,G2



*For a technical report regarding reading in the home, visit (English only):

<http://www.cls.ioe.ac.uk/shared/get-file.ashx?itemtype=document&id=1719>