



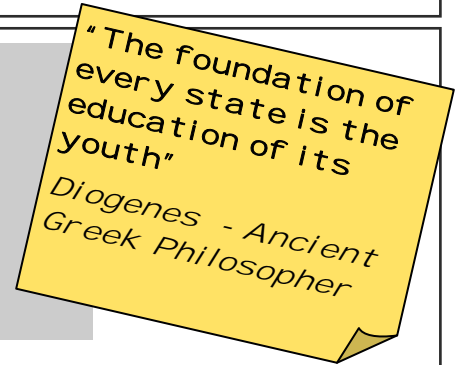
The Comet

The Newsletter of K. International School Tokyo

Volume 13 | Issue 4 | February 2010

➡ In this issue...

- ▶ New Appointments...p. 2
- ▶ Guidance Counselor's Office ...p. 3
- ▶ Grass Comments...p. 5
- ▶ ISA Testing...p. 5
- ▶ School Handbook...p. 5
- ▶ Athletics Stars...p. 7
- ▶ Peace Boat...p. 8
- ▶ Japanese New Year...p. 9
- ▶ Supervision Notice...p. 9
- ▶ SRC Report...p. 10
- ▶ Basketball Season...p. 11
- ▶ Congratulations Carmina!...p. 12



From the Principal's Desk

What other topic could I start with than "the grass!" Over the winter holidays, the artificial turf was laid and the difference it has made to the environment and feel of the school is indescribable.

Children are playing and interacting differently, they are able to do handstands, forward rolls, sit and talk and enjoy the outdoors. The green has enhanced the whole school environment and has been commented on by students, teachers and staff alike. I would again like to thank our parent body who have been so supportive of this change to our physical resources at the school. Fundraising will continue for the artificial turf over the rest of the school year. Ideas for this are welcome from parents.

Another major event that has mobilized our student body is the earthquake in Haiti. Students, along with Ms Gray (G4A), organized a fundraising event called "K. Idol." The results of the fundraising and the evening will be posted in our next newsletter. The compassion and energy displayed by these students and those teachers who assisted is truly a reflection of the action component in the IB programs. K. Idol was held in conjunction with "Dancing with the Stars," a fundraiser organized by Mr Ralph for our representative team at the World School Games.

Carmina (G12) returned from Davos, Switzerland earlier this month where she attended the World Economic Forum as the youngest participant. Carmina is the living embodiment of the IB Learner Profile and I would encourage you to take a look at <http://www.youtube.com/watch?v=S8ViElaZETg> to listen to Carmina talk about her hopes for the world.

Lastly, inside this edition you will notice the new appointments section where the new Head of School and other leadership positions are introduced. It has been an energizing and exciting task to appoint these experienced professionals to positions of leadership starting the academic year 2010-2011.

Anne Grahame
Principal

DATES TO REMEMBER



February 17 – 18:
(G3/G5/G7/G9) ISA testing

February 26:
(G10) MYP personal project exhibition

March 22:
Student-led conferences

March 22 – 24:
No clubs/ESL this week

March 24:
(G12) End of year reports issued
End of Winter Term

March 25 – 27:
Staff development days

March 25 – April 5:
Spring holiday

April 5:
Staff development day

April 6:
(L/P/S) Start of Spring Term

April 12:
Clubs and ESL start

April 29 – May 5:
Mid-term break

New Appointments

We are happy to announce the appointment of a new Head of School, Secondary Principal and Lower School Coordinator beginning 2010-2011.

Head of School

Dr Nanci Shaw has been appointed as KIST's new Head of School. She has over 25 years of experience in teaching and administration. She started her career with a BA in Elementary and Special Education, followed by a M.Ed. in Secondary Education and a Ph.D. in Educational Administration. She has also taught at Iowa State University in the field of international comparative education.

Nanci joins us from the American School of Yaoundé, Cameroon, West Africa where she has served as Head of School for the past five years. Nanci has a wealth of experience in international education having worked at the American School in London, Bonn American High School and facilitated the implementation of the IB programs at Bonn International School. She has also lived and taught in Japan before at a Department of Defense school in Iwakuni.

Nanci is also very familiar with school accreditation processes and has led successful CIS/MSA accreditation processes. She is a certified Board Trainer with the Council of International Schools (CIS).

Nanci is passionate about the IB programs and ensuring that students are at the center of school life. She is excited about her role and returning to Japan. Nanci has been appointed for five years.



Secondary Principal (G6-12)



Robin Schneider has been appointed to the position of Secondary Principal. Robin joins us following his completion of eight years at Korea International School. During his time at KIS he has fulfilled the roles of Middle School Principal and Middle School/High School Associate Principal.

Robin is experienced in all aspects of education and has completed his Masters of Educational Leadership from Lehigh University, PA, USA. Robin also has experience with WASC accreditation and has been an EARCOS presenter on pedagogy behind the infusion of technology into the curriculum.

Robin has previously worked in Japan. He was employed at Nishimachi International School for three years as a teacher of mathematics. He is also an experienced volleyball and basketball coach and has been very involved in the development of an athletics program and an IT plan at his current school.

Robin is an ardent exponent of inquiry and an integrated approach to learning and is excited about joining KIST in August 2010. Robin has been appointed for three years.

Elementary Principal (K1-G5)

Greg Brunton will take on the newly created role of Elementary Principal continuing on from his year as Acting Primary Principal. Greg's appointment is for two years.

Lower School Coordinator

Erin Hoover will move from her position as Grade 1 teacher to take on this position. As most of you will know, Erin has a wealth of experience and knowledge specific to PYP in the early years. She is an experienced Early Years teacher, a PYP workshop leader (specializing in the course 'PYP in the Early Years') and also has experience in leadership as both PYP coordinator and vice principal. We feel confident that with her prior experience and her developing knowledge and understanding of our school, Erin will be able to work closely with Greg and Emma to develop a strong and effective Lower School department. Erin's appointment is for two years.

ADVERTISEMENT

SUBSCRIBE AND SAVE 75%*

IB World contains all the latest news and views from the IB community worldwide. Packed full of inspirational stories, innovative teaching tips and fascinating interviews, subscribing means you and your school will never miss a word of the global conversation.

INDIVIDUAL

- Three issues of *IB World* for only \$30
- Delivery direct to your door
- Preferential rates when you renew

BULK

- 50 copies of every issue of *IB World*
- A 75% discount – you pay just \$450*
- Delivery direct to your chosen address



VISIT WWW.IBO.ORG/IBWORLD
OR CALL +44 (0)1795 592981

* 75% discount applies to bulk subscriptions only
Cover price US\$12/GBP6. Subscription prices and discounts quoted are for an annual subscription and apply to magazines sent outside the UK and Europe. Please state your location when ordering for the most accurate price.

Tokyo English Life Line

Tokyo English Life Line is a multifaceted, nonprofit organization that has been serving the international and business communities since 1973. Their services include free phone counseling and information, professional face-to-face counseling, and educational workshops. TELL has provided workshops to the secondary school at various times and in turn KIST would like to support TELL through promotion of these two upcoming events.

6th Annual TELL Ballet for Children

Yuki Onna - The Snow Princess

Date: Saturday, February 20, 2010

Starts: 2:00 pm

Ends: 6:00 pm

Venue: Tokyo American Club

Performances start at 2:00 pm and 4:00 pm

11th Annual TELL Charity Walk/Runathon

Date: Saturday, May 1, 2010

5km Run; 10km Run; 5km Walk

Last year, a group of staff and students from KIST ran in this event and this year we are again trying to field a team. At least 10 participants are needed. Interested parents are asked to contact the school by the end of Term 2. More details will be forthcoming in the next issue of *The Comet*.

Guidance Counselor's Office

COLLEGE ACCEPTANCE SEASON IN FULL SWING

Grade 12 students at KIST have been keeping themselves, Mrs Okude and Mr Wagner very busy over the past two months including the winter break with college application preparation and student essays. With applications being prepared for more than 50 different schools, Mrs Okude and Mr Wagner can be seen working on application packages, reproducing grade reports and proofreading essays throughout the day and into the early evening. The cause for all this activity has been the college deadlines.

Many schools in the United States have deadlines of January 1 and March 31 for applications, and schools in the United Kingdom have deadlines of January 15. Creating the proper and complete college application package requires many steps to ensure that the package submitted accurately reflects the student's effort and accomplishments. Many colleges require essays so as to get to know the student better and these must be polished to highlight the student's

activities and education. The essays are often a particular challenge with topics ranging from the practical: 'Why do you want to attend this college'; to the reflective: 'What particular experience in life has best prepared you for college'; to the humorous: 'If you were a tree, what kind of a tree would you be?' But the hard work does pay off when the college acceptances begin appearing and we have wonderful news of that at KIST.

Thus far, KIST students have received acceptance letters from: Warwick University, University of Glasgow, Imperial College London, University of Saint Andrews and Pacific Lutheran University in the United States. What is more rewarding is the scholarship offers and thus far we have two half-tuition offers from Pacific Lutheran University. There will be many more acceptances and scholarship offers before April and until then, the students wait anxiously for their letters.

Office Updates

Communication formats

As previously advised, we would like to remind all families that the current distribution system for school communication (e.g. newsletters, notices etc.) will change from the beginning of the 2010-2011 school year. All school communication will be distributed electronically through e-mail only. Families who have not yet registered a contact e-mail address are asked to do so as soon as possible. Addresses must be computer-based (mobile phone addresses are not accepted) and able to accept up to 10MB of data. We also recommend that families currently receiving paper communication change to the electronic format during the current year so that any difficulties can be ironed out before next year. To change your current method of communication, please complete the Communication Registration Form (available on the school website Contact > Forms page) and submit it directly to the office. We ask for the cooperation of all families in ensuring the transition to this new environmentally-friendly system of communication proceeds smoothly.

Student withdrawals

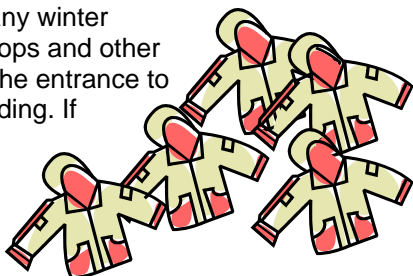
We would like to remind families intending to withdraw their children from KIST at the end of the winter term to please be sure to submit a Student Withdrawal Form at least one month in advance of the final date of attendance. The form may be downloaded from the Contact >> Forms page of the school website.

Donation of paper

We have again received a donation of A4 paper from Furuya, a company located in the same neighborhood as KIST. Furuya stored left over paper, cut it to A4 size and delivered it to school. We would like to thank all the staff at Furuya for their generosity. KIST receives a great deal of support from our local community and we ask all students, parents and staff to assist us in maintaining this important relationship with our neighbors.

Lost and found

There are many, many winter coats, PE tracksuit tops and other items of clothing at the entrance to the main school building. If you are missing an item please be sure to check this large (and growing!) mound of clothing.



Calendar errata

Please amend your school calendars. There was an error in the club/ESL free weeks. Clubs and ESL will run as per usual during the week of February 22-26. They will not run during the week of March 22-26.



Artificial turf

As mentioned in the principal's message, there have been many changes since the artificial turf was installed on the school playground. Thanks to the turf, we can now help to prevent damage to the health of students and teachers prone to asthma attacks. Also, as expected, there has been a dramatic decrease in the number of injured students coming to the office. Now, no one slips on the sand that was always brought inside the buildings and the school is generally much cleaner.

We have observed students enjoying playing new games on the playground that they could not play before. It also seems like the turf has enabled students to demonstrate aspects of the IB learner profile more often than before. Furthermore, K1-K3 students have also been enjoying PE and other activities on the playground. As we watch the students and teachers using the playground, we feel satisfied that installing the turf has been a wonderful addition to the school facilities.



To keep the turf in prime condition, there are a few precautions that we all must follow. These are posted on the fence around the playground; however, we would like to ask for your cooperation in understanding the following main points:

- No food or drinks are allowed (except for water).
- Metal spikes cannot be used.
- Do not dig out the filler chips (surface temperature suppression chips).
- Do not bring in materials made of glass (broken glass may contaminate the chips).
- No vehicles are allowed on the turf.

We will continue with our fundraising campaigns to raise money for the artificial turf and its maintenance and repair costs. The Friends of KIST Artificial Turf Committee is now planning a number of fundraising activities such as a hanami festival, bingo and a futsal tournament. Details of these activities and an accounting report will be included in a special newsletter from the Committee that will be issued soon. We also welcome ideas for further fundraising activities. If you have any suggestions, please e-mail Friends of KIST at friends@kist.ed.jp.

Grass Comments



Shauna and Malini (Grade 1) ... it feels nice and soft... I like it because I can stay and have fun like laying down and playing...

Shiza (Grade 9) ... the grass is nice as now you can lay down and relax...

Conan, Zijun, Amane, Nimit (Grade 2) ... it's easier to do soccer... it's more comfortable when you fall down because it doesn't hurt... you can slide and not get dirty...

International Schools' Assessment Testing Program

The Australian Council for Educational Research (ACER) has again been engaged to conduct an assessment of Reading, Mathematics and Writing. ACER is an independent Australian research and development organization that conducts the ISA in approximately 240 schools worldwide each year.

The ISA assessment program is designed especially for students in international schools in Grades 3 to 10. It is based on the internationally endorsed reading and mathematical literacy frameworks of the OECD's Programme for International Student Assessment (PISA). (<http://www.acer.edu.au/isa/> Accessed 29/1/10)

This year, the ISA will be held at KIST on February 17 and 18 in Grades 3, 5, 7 and 9. Notification of results will take place in Term 3.

Errata: If you received an ISA testing letter with the dates as February 17 and 19, please amend this to **February 17 and 18**.

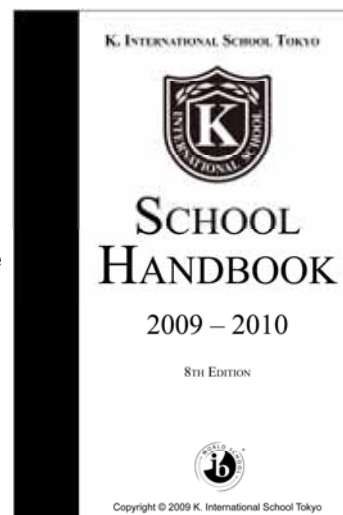


School Handbook 2009-2010

We are very pleased to announce that the KIST School Handbook for the 2009 – 2010 school year has been uploaded to the school website Admissions > Documentation page (<http://www.kist.ed.jp/node/41>).

The handbook is an important document that is designed to help you and your family understand the school's procedures and expectations. It provides a guide to the school rules and regulations that all families in the school community are expected to follow. We hope that it will assist us to work together in a successful learning partnership. In this regard, we ask you to read the handbook carefully and refer to it at times when you are unsure about the procedures to follow in particular situations. By following the procedures outlined, you will help contribute to maintaining the smooth running of the school's daily operations.

The handbook is a public document and may be viewed by anyone interested in finding out more about our school. At the time of preparation, it contained the most up-to-date information on the school; however, it is possible that policies and procedures may change from time to time. For any changes that may occur during the year, families will be informed accordingly. Printouts of the handbook are available from the office upon request.



Action in the Primary School

As a parent myself, I know your child's education is very important. A child's education is not complete if it focuses on academics alone but must also consider the development of the whole child. At KIST, we strive to provide an education which follows the IB's aim of developing, "internationally minded people who, recognizing their common humanity and shared guardianship of the planet, help to create a better and more peaceful world."

Some recent Primary events at KIST have clearly demonstrated this belief in education. Immediately after learning about the situation in Haiti, the Grade 4 classes, led by Ms Gray and Mr Henderson, organized a carnival type fundraiser with games, food

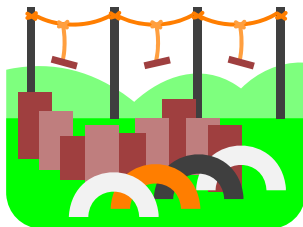
and shops to raise money for victims in Haiti. Students planned, organized and carried out the fundraiser which not only will help others they do not even know, but also demonstrated the ability to use the skills they have learned to take action in helping those who are in a time of need. This spark inspired Ms Gray, Mr Ralph and Mr Adams to organize other teachers from different areas of the school as well as Secondary students into coordinating the K. Idol event held on February 10. The K. Idol fundraiser was a collaborative event for others to get involved with in different ways. For example, Grade 5 classes, organized by Grade 5 students Haruto, Kiseki, Koki and Moana, contributed to the event by doing extra work around their home or

school and then donating the proceeds to the fundraiser. Other students and classes around school have also been volunteering to help in different ways. But most of the time, action is not fundraising. Students demonstrate action every time they decide to act after learning and reflecting. For example, picking up trash left on the ground by someone else, taking care of someone when they are crying, closing the door to save energy, using our respectful words and not our fists to solve problems, organizing the classroom bookshelf when it is messy, or choosing a healthy snack with water, all demonstrate taking action. How we choose to act, in either big ways or small ways, demonstrates who we are.

Greg Brunton
Primary Principal

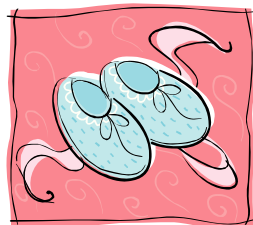
Builders/Carpenters Needed

We are looking for one or two parents who have building/carpentry skills that could help with the building of a sandpit for our main playground area. This would involve the purchased of materials (school funded) and a day or so to put it together. You would work together with Ms Cooke and Mr Brunton to design the sandpit. If you think you might have the skills and time to help, please contact Ms Cooke at a_cooke@kist.ed.jp.



Indoor Shoes

With the replacement of the dirt field with artificial turf, the campus environment has become much cleaner. Because of this, starting on Monday, February 15, students in Grade 1 through 12 will no longer be required to have or change into indoor shoes when entering the buildings. The shoe boxes in the entrance to the main school building will be removed soon. If a student's PE shoes are different from their school shoes, they are welcome to store them with their backpack on those days. Because students in K1 through K3 use the Lower School playground, they will continue to use both outdoor and indoor shoes.



Bottle Caps Wanted

My name is Johnathan from G3 and I would like to talk about a donation of bottle caps from plastic drink bottles. I want to help other countries from getting sick.

You can help other countries too by putting your bottle caps in the box that you will see near the school door entrances. The bottle caps will be taken to a depo and they will be turned into chips. The chips will then be turned into money. Then, the money will be used for vaccinations by ECOCAP.

For more information, visit: www.ecocap007.com.

Thank you.



K3-G5 Music

We are continuing to search for a long term music teacher for our Lower and Primary music classes. Until then, we are fortunate to have Mr Carlo teaching the music classes. He is a trained and certified teacher who loves integrating playing his guitar into the lessons. You might even have a chance to spot him with his ukulele.



Grade 6 are Stars in Mathletics!

Mathletics World Hall of Fame				Time Remaining: 6 d 3 h 4 m	view previous
World Top 100 Students	World Top 50 Classes	Australia Top 100 Students	Australia Top 50 Classes		
	7 Miss Ashton : Year 5	St Finbar's Primary School, NSW, Australia	29,853		
	8 Mr. Heppenstall : Year 6	K International School, Tokyo, Japan	28,617		
	9 Mrs Boonzaaier : Year 5	Durban Girls' College, KZ, South Africa	27,559		
	10 Mr Thorpe : Year 7	ACG International School Vietnam, Vietnam	27,253		
	11 Miss Bradshaw : Year 8	Needham Market Middle School, United Kingdom	26,850		
	12 Miss Wood : Year 6	Daisyfield Primary School, United Kingdom	25,433		
	13 Ms Skavaas : Year 2	Avalon Public School, NSW, Australia	23,552		
	14 Mr Bomman : Year 5	St John's Preparatory School, GT, South Africa	21,000		
	15 Mr. Medrala : Year 4	New International School of Thailand, Thailand	20,727		
	16 Mrs. Sullivan : Year 6	International Grammar School K-6, NSW, Australia	19,434		

Well done Mr Heppenstall's Grade 6 mathematics classes, currently ranked number 8 in the world of Mathletics!

Japan World Maths Day

World Maths Day 2010 is coming on March 3 and Hannah from G8A has been selected to be the Japan ambassador! Hannah will be the contact person for Japan and she will talk about Mathletics and how it is helping her development in mathematics.



All middle school students have a subscription to Mathletics. Some complete course work and also compete against other students from around the world in Mathletics Live.



Hannah is a top performer in this part of the program.

Congratulations and good luck Hannah!

KIST's published author



Faye of Grade 11 has donated a copy of her very own published book to the KIST library.

Faye wrote a collection of short stories for her personal project as the culminating activity of the MYP focusing on the

health and social area of interaction.

Her talent for writing and the messages about how we think and act can now be enjoyed by the students at KIST.

Look out for "Angel Service" and congratulate Faye when you see her.

Well done Faye!

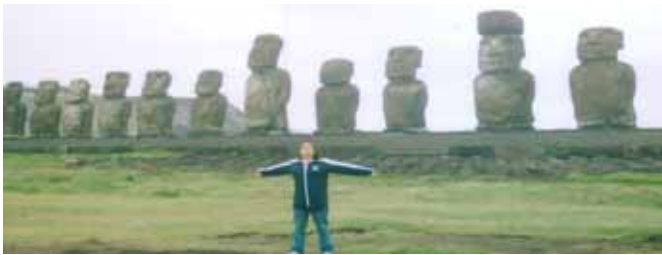


My Travel on the PEACE BOAT as a Volunteer Staff Member

I went on a ship called "PEACE BOAT" as a volunteer staff member. I went with my grandmother, and we went all around the world in three months.

We departed from Yokohama, Vietnam, Singapore, Seychelles, Kenya, Suez Canal (This time the Greece fleet helped us be safe on the ship, because pirates could appear), Egypt, Turkey, Greece, Croatia, Malta, Italy, Morocco, Spain, Cuba, Mexico, Panama, Panama Canal (through the Panama Canal), Ecuador, Peru, Easter Island, Tahiti and Samoa. We went to twenty-one countries. On the ship, the volunteer staff members planned a lot of projects such as sports days, dance competitions, fashion shows, summer festivals and more, for people to not get bored on the ship.

Before we landed in each country, we had explanatory meetings, so we could understand about that country. In some countries, I mixed with the local people, and I also went to an orphanage. We asked the 66th cruise members what we needed to bring to the orphanage.



The 67th cruise members brought some blankets, medical supplies and some toys for the orphanage. The kids at the orphanage were very friendly and kind to me. They hugged me, and they were hanging down from my arm. They were cute, but I could feel in some

parts that they have a shortage in love... In the world there are lots of children who are like the orphanage kids, so I feel that I am really blessed (and feel happy) about my life.

There were lots of cultural heritage like the pyramids, Machu Picchu and the Easter Islands moai statues. The pyramid rocks were the same height as my grandmother, so I was surprised that people carried the rocks to build the pyramids. Machu Picchu was at a high place. The air was hard to breathe and it was hard to walk around the mountain. I thought that the Inca people were smart to make a country up high in the mountain. The moai statues were bigger than I thought, and the moais that stand in a line, were well worth seeing for me. During my travel, I noticed that people around the world were thinking about the same thing, and they need help from many people. When I grow up, I want to work where I can help and support people around the world.



Rika (G8B)

Professional CD Recording Opportunities

Occasionally, KIST allows a recording company to use one of our music rooms to make a professional CD. To date over 70 of our students have been singers for these recordings. The CDs are sold commercially in music shops and on the iTunes Music Store. If you are interested in your child being considered for a recording project in the future, please contact Mr Adams to receive more information on how to become involved. The recording company is called Star Fruits Entertainment and the commitment usually requires approximately two to three hours after school. Please e-mail Mr Adams at school at t_adams@kist.ed.jp for more information.



Japanese New Year Celebration

On Wednesday, January 27, we held our Japanese New Year celebration. Once again this year, we were fortunate to be joined by many sumo wrestlers from Kise stable.



The students were so excited to push or touch the bodies of the sumos. They were surprised with their body size. One very entertaining performance occurred when four or five Grade 5 students tried to push a sumo down, but he did not move at all. And when a Grade 1 student tried to fight by himself, the sumo fell down and lost. The humor of the sumos helped the students to have a great time.



Students were also able to pound mochi rice cakes together with the sumos. Usually, when students try to hold a heavy pounder by themselves, they won't be able to pound smoothly because they do not have enough strength, but when the assistance of the sumos, the rice cakes were made instantly.

Students smacked their lips over four different tastes of mocha: soybean flour (kinako), seaweed, sesame and sweet red bean, that were made by volunteers. The most popular taste was sesame.

Thanks to the sumos from Kise stable and all the volunteers, we were able to enjoy an entertaining Japanese New Year celebration. Thank you everyone for your cooperation!

Supervision Notice

A reminder to parents regarding supervision of students at school and the duty of care we hold. The level of supervision changes with the age of the student and is provided so that foreseeable accidents may be prevented. Students are supervised in the following spaces and at the following times only:

Time	Lower	Primary	Secondary
Before School	8:00 K1 & K2 Not available unless signed up for Before Care (Before Care classroom advertised at front reception each day) K3 Lower School Playground G1 Same as Primary School	8:00-8:30 Ground	8:15-8:35 Ground/Building
Morning Recess	G1 Same as G2	10:00-10:20 G2 Recess 10:20-10:40 G3/G4/G5 Recess	10:45-11:05 Ground/Building
Lunch Recess	G1 Same as G2	12:00-12:30 G3/G4/G5 Recess 12:30-1:00 G2 Recess	1:00-1:35 Recess - Building/ Ground/Gym
After School	2:00-3:30 K1, K2, K3 not available unless signed up for After Care 3:00-3:30 G1 Same as Primary	3:00-3:30 Ground	None unless student is in club activity or studying in the library

Please ensure that you do not send your child to school before the appropriate time as supervision will not be available. Further, when visiting the school, individual parents/guardians are responsible for the supervision of their children when at school outside of the times outlined above. Secondary students are not to remain after school unless in a supervised activity.

Secondary News

We are fast approaching the time of year when our Grade 12 students are mentally preparing themselves for their mock exams, followed by three weeks of IB exams in May. As these students prepare to depart our school, the next generation of students is preparing to take over leadership of the school. During this month campaigning for, and election of, our new SRC executive takes place.

It has been my pleasure to work with the SRC this past year in progressing ideas they have presented. The 2009-2010 Executive, in conjunction with the SRC grade representatives, has established a firm foundation for future Executives and I believe the SRC will continue to grow in its role as a forum for our students' voices to be heard. Please take the time to read through the SRC report included on this page.

This month is a big month for our Grade 10 students who are in their final year of the MYP. On February 26, they will present their Personal Project to the school community. The Personal Project is a very important part of the MYP and needs to reflect the student's experience in the program. Grade 10 students have worked hard on their individual projects over this year and deserve congratulations. My thanks to Mr Ferris for coordinating the Personal Project and thanks to all staff who acted as mentors.

Next year in the Secondary School there will be some changes with regard to textbook purchases. From the next academic year students will be expected to purchase their textbooks in advance of the school year. Booklists and options for purchases will be drawn up and information sent home well in advance of the end of the current school year.

There has been a great deal of activity taking place in the Secondary from cultural to sporting events: Mr Wagner will take a group of students and accompanying staff to Yokosuka High School for a **Model United Nations (MUN)** scrimmage this weekend; Ms Ritcey took a group of students to St. Mary's International School for **Brain Bowl** this past week; Mr D. Bates continues to work with the Grade 11 students preparing for **Habitat for Humanity**; Mr Spring is organizing a team from KIST to attend the **World School Games** in Ohio in July; Ms Cussen is directing a group of students who will perform Oscar Wilde's **The Importance of Being Ernest** sometime in March. Added to this are the everyday co-curricula activities offered by staff such as softball, baseball and basketball (see page 11 for details), making for a very busy term. I would like to thank all staff, students and parents for making these activities possible.

If you have any questions about programs and activities or news in the Secondary, please feel free to contact any of your child's teachers or me at any time.

Anne Grahame
Secondary Principal

SRC Report

Hello fellow teachers, parents and students of KIST! We are the Executives of the SRC, here to report to you about our progress and accomplishments.

Members of the SRC have had regular meetings every Thursday, discussing a variety of issues and resolutions in order to enhance the quality of the environment in our school community. All of the members in the SRC played his/her role to significantly contribute to our progress and without a single one of them, it would undoubtedly have been impossible to have reached the goals of the SRC as successfully as we have. We made many kinds of changes; some were gradual and some were impromptu; some were big and some were small. A few examples include setting up the hooks for bags in the secondary locker areas, setting a tradition in our school of graduation gowns, and functioning as co-members in the decision making process in choosing the next head of the school. There are so many more areas in which the SRC tried to make positive changes and is still undertaking a great number of issues, concerned with the school community as a whole, within our full commitment and responsibility. Although it is the time of the year when we finally hand over our roles and positions of executives, we are sure that the next executives are going to have more commitments in making positive changes in our school that would forever benefit the students of KIST for years to come.

James (President); **Carmina & Disha** (Vice-Presidents); **Soo Min** (Treasurer)



As the SRC Executives' term is coming to an end, we are thrilled to share with the rest of the school some of the projects the SRC has taken on this school year.

SRC ACHIEVEMENTS SUMMARY

- SRC has successfully had bag hooks set up for secondary students' convenience.
- SRC has successfully set in place a school tradition of graduation gowns for Grade 12 classes.
- SRC has actively been organizing school spirit activities such as lunch break sports tournaments.
- SRC has attempted to voice student opinion on the issue of printing at school.
- SRC has been a co-member of the decision making process to choose the next Head of School.
- SRC has been involved with the fundraiser for Haiti earthquake victims through the K. Idol event.
- SRC has other projects underway.

Working with the SRC class representatives throughout the school year has been very exciting for the Executive and it has been a great chance and privilege for us to represent the KIST student body! Thank you for your support throughout the year!

Basketball 2009/2010 Season

The KIST Comets Basketball season has been an extremely busy one thus far. The Boys U/18 team, coached by Ms Cussen, began playing before Christmas with away games against St. Mary's and the Lycee Francais Japonaise (LFJ). Both games, the boys put in solid efforts and were very unlucky to lose to LFJ, going down by two points. The winter break was a great chance for the team to regroup, coming back the first week after losing after another improved performance against Columbia International School and then playing an excellent four quarters against International Secondary School (ISS), winning very convincingly. Next stop was Yokohama for the two day invitational tournament where we played several teams from around Japan. The boys finished in fifth place after losses to Osaka International School and St. Maur and another win against ISS. The following Monday, we played away against Columbia and lost with a very undermanned team. On a cold wet Monday night, we took on the American School in Japan (ASIJ) and were expecting a very tough game. The team were obviously switched on from the beginning of the match scoring



the first 12 points and never looking back from there. We eventually won by 37 points in a high scoring game. Captain Pyay Phyo (PPO) has displayed great leadership throughout the season so far with Jakub and Jeff providing valuable support scoring many impressive baskets in tight situations. It has been most impressive to see Tyson from Grade 6 and Sho from Grade 8 display maturity beyond their years. Argi and Brandon have also shown solid defensive skills grabbing numerous rebounds throughout the games. Yubo, Jin Wook and Claude have also displayed their basketball prowess, scoring and rebounding in the games that they have played. JC and Alakhsa have played several games and have developed very well.

The Girls U/18 team, coached by Ms Ritcey, commenced their season with a game against Columbia played in the KIST gym, and although they

they showed some good signs, were outplayed by Columbia. The more the girls practiced, the greater the improvement was, and following a loss to Canadian International School, we ventured over to Yokohama to play in the Invitational Tournament at St. Maur International School. We played three games against Osaka International School, St. Maur and Canadian Academy Kobe. All of the games were well fought out with the girls displaying a brilliant performance against the Kobe side going down by two points in a nail biting finale. The girls collected their first win of the season in the return game against CIS, winning by six points. The girls then took it up to ASIJ on that wet February night being level with them deep into the third quarter but eventually went down by twelve points. The girls have been lead by Sara, Ria and Mei, all of whom have scored well in each game.



Karlee's, Monica's and Dingyun's rebounding has also been outstanding and has been well supported by the run of Shifa, Shiza, Momo and Jessica. Aki and Hikaru have provided valuable support in the defensive half and have also scored when necessary. Well done to all girls thus far this season. I would like to give a huge thank you to Ms Cussen and Ms Ritcey for their efforts with the coaching this year and also to Ms Ozawa, who has not only given up her weekends, but has also stepped in to referee games when necessary. Thank you to all of those involved.

Will Spring
Sports Coordinator

GIRLS

Vs **Columbia IS**
19 – 43 (Loss)
Vs **Canadian IS**
11 – 28 (Loss)
Vs **Osaka IS**
16 – 40 (Loss)
Vs **St. Maur IS**
18 – 44 (Loss)
Vs **Canadian Academy Kobe**
18 – 20 (Loss)
Vs **Columbia IS**
30 – 24 (Win)
Vs **American School in Japan**
19 – 31 (Loss)

BOYS

Vs **St. Mary's**
25 – 44 (Loss)
Vs **Lycee Francais Japonaise**
27 – 29 (Loss)
Vs **Columbia IS**
37 – 48 (Loss)
Vs **Intl Secondary School**
58 -13 (Win)
Vs **Canadian IS**
23 – 24 (Loss)
Vs **Osaka IS**
20 – 42 (Loss)
Vs **St. Maur IS**
35 – 37 (Loss)
Vs **Intl Secondary School**
50 – 15 (Win)
Vs **Columbia IS**
36 – 62 (Loss)
Vs **American School in Japan**
82 – 45 (Win)

Congratulations Carmina!



You have done the K. International School Tokyo community and yourself proud. We would like to recognize your amazing achievements by asking any members of our school community (parents, students, teachers, alumni) to write a tribute in 100 words or less to your continued demonstration of the attributes of the Learner Profile. Students, parents, teachers please e-mail or hand your tribute to the IB Office or myp_co@kist.ed.jp.

We will publish a selection of entries in the next issue of *The Comet*.